

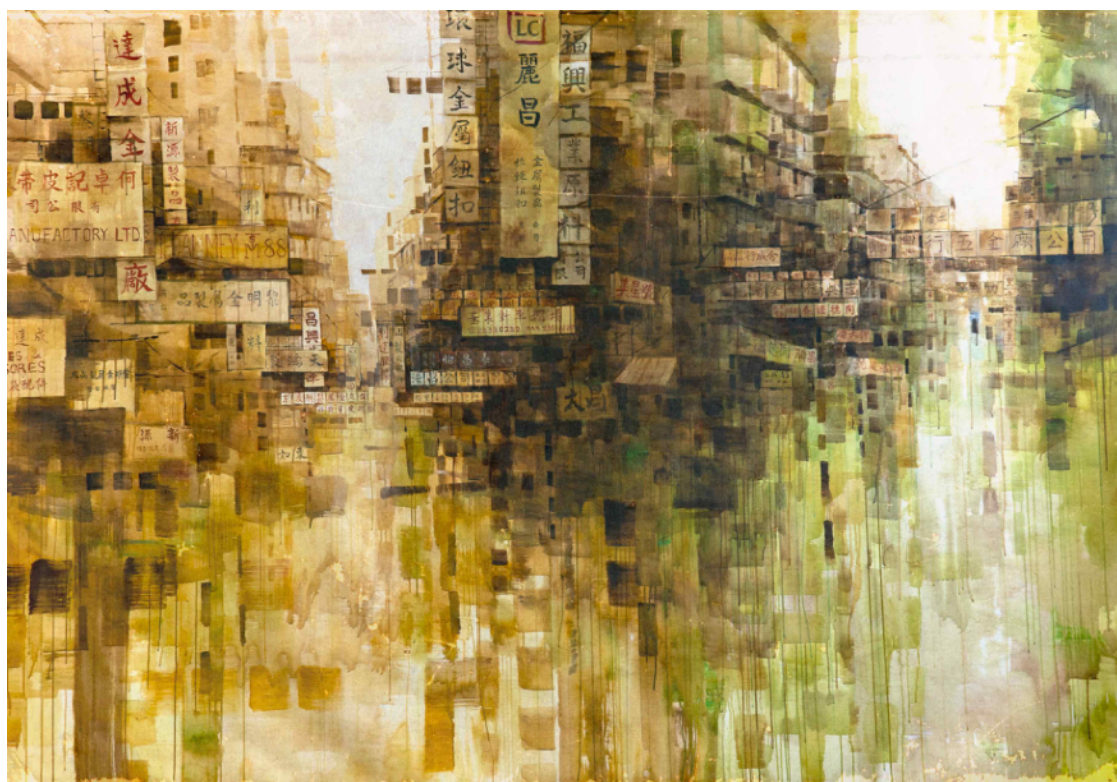
For immediate release

Elaine Chiu

*Before Memories Expire | The Memory Library*

6 May – 6 June 2021

Opening reception: 6 May 2021, 5 – 8pm.



Elaine Chiu, *Fabric of Urban*, 2020, acrylic on canvas, 152 x 250 cm. Courtesy of the artist and JPS Art Gallery.

“How do we, as humans, individuals, and members of a community, embrace the destruction and recreation of our socio-economic cityscape, collective memories and interwoven identities?”  
— Elaine Chiu

Growing up in Yau Tsim Mong District, one of the busiest neighbourhoods in the city, Hong Kong artist Elaine has witnessed the drastic and continuous transformation of the urban space and environment since her childhood. The transient, fluidic, intersecting memories and impressions about Hong Kong have been deep-rooted in her consciousness and self-identity.

With the effect of the amendment of the Building Ordinance in 2011, thousands of hand-written sign boards or neon-lit have since been removed all around the city. In the past three years, Elaine initiated an on-site sketching campaign to record the fleeting cityscape with her paintbrush. Street-sketching prompts her to contemplate the disappearance of numerous heritage buildings and tenement houses in the local community under rapid urban renewal.

“*Before Memories Expire*” is the continuation of Elaine’s previous on-site sketching and community art project. Centring her research around endangered buildings, architecture, cityscape, and memories of Hong Kong, her work explores different organic carriers and their relationship with time and people, including community spirit, architectural structures and memories, that are formed bottom-up in the urban space. This exhibition is divided into two parts. The main part “*Before Memories Expire*” features Elaine’s latest acrylic paintings and debuts her fresh to practice sculptural work. The sub-part “*The Memory Library*” displays Elaine’s watercolor on-location sketches and photos of her sketching activities.

## **Additional artist-in-conversation event**

“*Before Memories Expire*: In Conversation with Artist Elaine Chiu”

18 May 2021, 4 – 5pm

Venue: JPS Art Gallery

Moderator: Mr. Kenneth Chan (Research Associate at University Museum and Art Gallery, HKU)

Hong Kong artist Elaine Chiu joins moderator Kenneth Chan in a conversation of her working process, inspirations, and trajectory as an artist. Hong Kong’s endangered buildings, architecture, cityscape and memories are some of the cornerstones of Elaine’s research and practice. Her work not only explores space, memory and the city’s evolving urban identity, but also conveys the transience and fragility of Hong Kong’s cityscape. In this conversation, Elaine will share the story of her creative practice, her muses, and her work as a personal investigation of Hong Kong’s transient, fluidic, and intersecting memories. This conversation is presented as part of *Before Memories Expire*, an exhibition at JPS Art Gallery on view from 6 May to 6 June 2021.

## **About Elaine Chiu**

Through urban sketching, community projects and paintings, Elaine explores space, memory and community identity of urban environments. Her work communicates the transient and fragile nature of cityscapes and the identity displacement under rapid urban redevelopment.

Born and raised in Hong Kong, Elaine earned a BA (Hons) in Art History from the University of Hong Kong in 2018. Elaine has participated in a variety of art projects, including Vivid Sydney Light Festival 2018 and the Hong Kong UNESCO Global Geopark project 2020. Her work has been widely exhibited and awarded by multiple local and international institutions.

Elaine has received commissions from the HKSAR Government, Hong Kong Economic and Trade Office, and various internationally recognised brands. Elaine's works are also in the permanent collection of the Hong Kong University Museum.

Website: [www.elainechiu.com](http://www.elainechiu.com)

## **About JPS Art Gallery**

Established in 2014 in Hong Kong, JPS Art Gallery is an independent contemporary art gallery presenting works of emerging and established artists from around the world.

The gallery is founded with a passionate spirit that dedicates to the new digital age and the exploration of the world of fine art and pop culture. We aim to create an innovative environment for a new generation of artists and collectors, fostering a creative space for all. We focus on fun and playful works of the era that spans across different mediums and disciplines, showcasing a discerning selection of works that embody the aesthetics of today.

We are committed to supporting the culture and art scene both in Hong Kong and Japan, creating a vibrant local art community. The gallery regularly presents works of emerging artists in our gallery spaces in Hong Kong and Tokyo as well as international art fairs, giving them a platform to gain global exposure, supporting young artists to launch their careers. JPS has also been an active contributor to society and the local art scene by sponsoring various charity events and auctions.

## **Location**

218-219, 2/F, Landmark Atrium, Queen's Road Central, Central, Hong Kong.

## **For all media and press inquiries, please contact**

Angela Tam | [angela@jpsgallery.com](mailto:angela@jpsgallery.com)

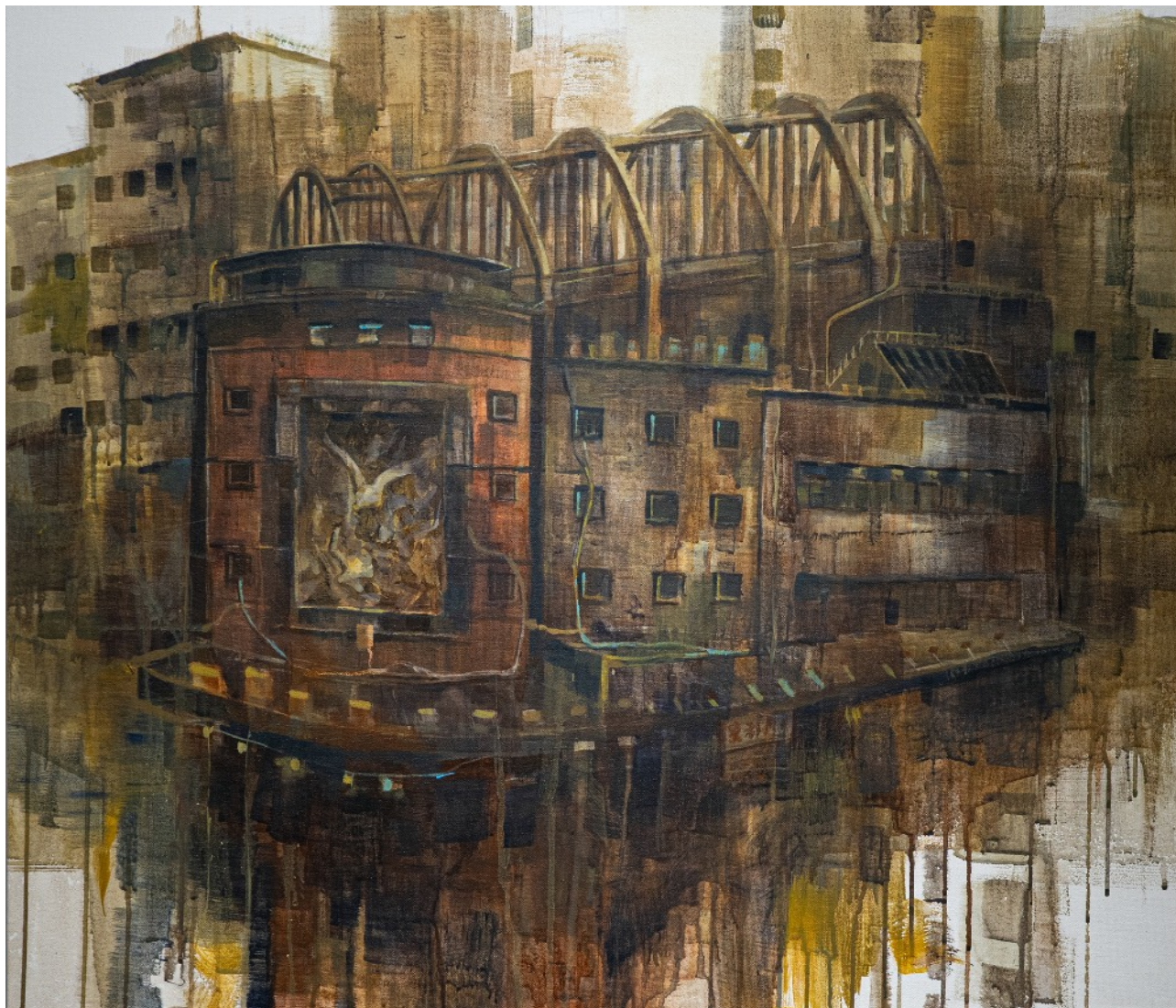
## **Hashtags for social media**

[@elainechiuart](https://www.instagram.com/elainechiuart) [@jpsgallery](https://www.instagram.com/jpsgallery) [@jpsartstore](https://www.instagram.com/jpsartstore)

[#jpsgallery](#) [#jpsartgallery](#) [#jpsartstore](#) [#ElaineChiu](#) [#BeforeMemoriesExpire](#) [#趙綺婷](#) [#記憶若有限期](#) [#landmarkhk](#) [#contemporaryart](#) [#art](#) [#exhibition](#) [#artexhibition](#) [#artshow](#) [#hkartist](#) [#watercolorpainting](#) [#acrylicpainting](#) [#architecture](#) [#hongkonglandscape](#) [#hongkong](#)



Before Memories Expire Key Highlights | 6 May - 6 June 2021  
ELAINE CHIU



**The State Theatre 皇都戲院**

2021

Acrylic on canvas

68.5 by 80 cm



Before Memories Expire Key Highlights | 6 May - 6 June 2021  
ELAINE CHIU



**Reimagining San Po Kong 幻想新蒲崗**

2021

Acrylic on canvas

82 by 102.8 cm

Before Memories Expire Key Highlights | 6 May - 6 June 2021  
ELAINE CHIU



**Cha Kwo Ling Village** 茶果嶺村

2021

Acrylic on canvas

61 by 53.3 cm



The Memory Library Key Highlights | 6 May - 6 June 2021  
ELAINE CHIU



**170 Yee Kuk Street 醫局街170號, 2020**

Watercolor on paper

57 by 38 cm

The Memory Library Key Highlights | 6 May - 6 June 2021  
ELAINE CHIU



**To Kwa Wan Redevelopment Area 土瓜灣重建區, 2021**

Watercolor on paper

38 by 57 cm



The Memory Library Key Highlights | 6 May - 6 June 2021  
ELAINE CHIU



**Fallen Neons 霓虹殞落, 2020**

Watercolor on paper  
38 by 57 cm

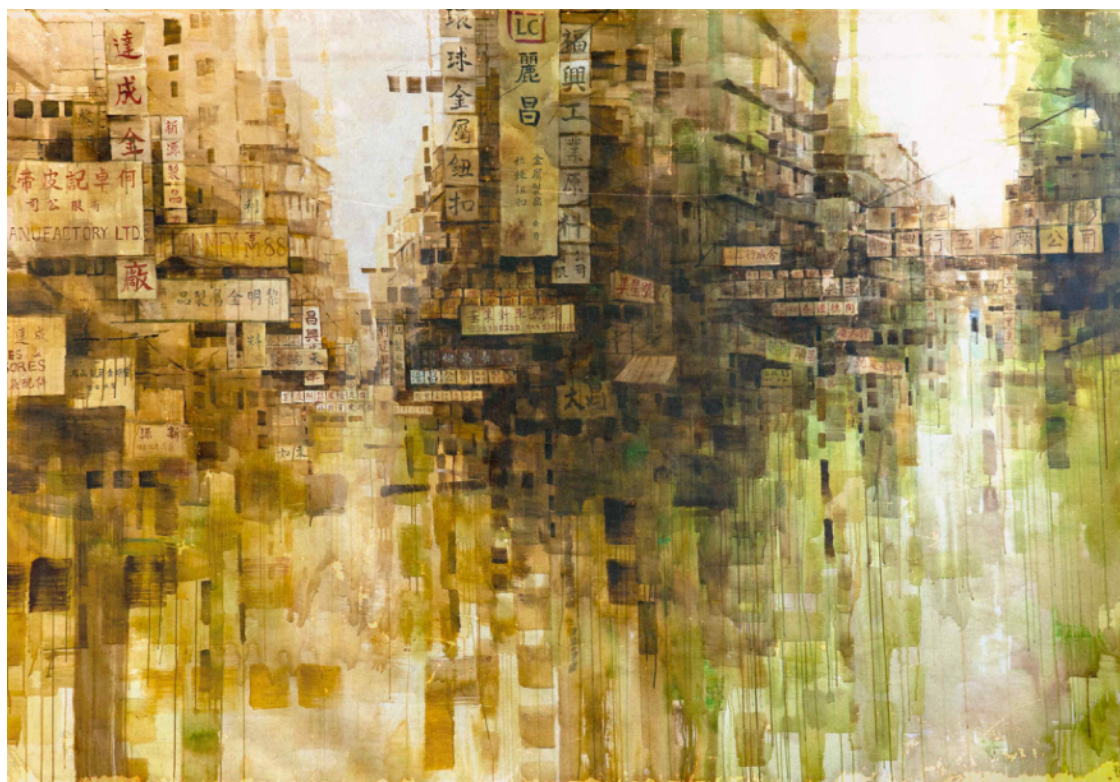
即時發佈

趙綺婷

## 《記憶若有限期》 | 《回憶圖書館》

2021年5月6日至6月6日

開幕酒會: 2021年5月6日, 下午5時至8時。



趙綺婷, 《城市紋脈》, 2020, 壓克力畫布, 152 x 250 釐米。圖片由藝術家和JPS畫廊提供。

「在建築物和建築群不斷刷新、呼吸、成長和演化的過程裏, 我們作為回憶的共同擁有者, 在不斷被拆毀和重建的社會環境、回憶與身份下, 該如何自處?」—— 趙綺婷

從童年到中學, 藝術家趙綺婷都在深水埗、石硤尾和油尖旺度過。趙綺婷成長在千禧年代, 目睹社區瞬息萬變, 見證周遭的建築物「建完又拆」、「拆完又建», 使她對自己和對香港的認知、印象, 都變得恍惚、流動、重疊, 回憶仿若有限期, 一觸即碎、一瞬即逝。



《建築物條例》於二零一一年修訂後，原本在市區林立、數以千計的手寫招牌和霓虹燈牌，自此被列為僭建物，遭逐一清拆。趙綺婷在三年前展開街頭寫生紀錄，令她驚覺，高速的重建令無數歷史建築和唐樓命懸一線，甚至逐漸消失於城景之中。

這次個人展覽《記憶若有限期》延續藝術家先前的實地寫生與社區考察，以唐樓和歷史建築物作為切入點，探討唐樓、建築物、城景及記憶，一些城市環境中一些由下而上產生的有機載體，以及它們與人、時間的關係。是次個人展覽展出一系列以壓克力為媒介的平面作品及首個雕塑創作。展覽的另一部分《回憶圖書館》則展出藝術家過往一年的社區紀錄和現場寫生水彩作品，以不同角度記載香港城景。

## 展覽對談活動

《記憶若有限期：與藝術家趙綺婷對談》

2021年5月18日，下午4時至5時

地點：JPS畫廊

講者：陳承焜先生（香港大學美術博物館附屬研究員）

香港藝術家趙綺婷將與講者陳承焜先生分享她的創作理念、過程和心路歷程。唐樓、歷史建築、城市景貌和記憶是趙綺婷創作中常見的主題。趙綺婷的創作探討空間、記憶和不斷演化的城市身分，反映了香港轉瞬即逝的城市面貌。這次對談活動，趙綺婷會分享她創作背後的故事，共同探討如何從個人角度，窺探香港城市景象演變和交疊的回憶。這次對談活動為趙綺婷於2021年5月6日至年6月6日在JPS畫廊的個人展覽《記憶若有限期》的活動之一。

## 關於趙綺婷

城市畫家趙綺婷以畫作及寫生探討城貌、環境與城市身分的關係。她的畫作渲染出城市的演變，在市區重建下，不斷重置變換的城貌與城市身分，記載香港多變、脆弱、轉瞬即逝的城市面貌。

趙綺婷，於香港土生土長，於二零一八年獲得香港大學文學院藝術史系（榮譽）學士學位。她曾為悉尼光影節（2018）、聯合國地質公園保育項目（2020）創作藝術項目。趙綺婷的作品多次在世界各地展出及獲獎，曾為香港政府、香港經濟貿易辦事處及多個世界知名的品牌作委約創作。趙綺婷的作品亦被收入香港大學美術博物館的永久館藏。

網頁：[www.elainechiu.com](http://www.elainechiu.com)

## 關於JPS畫廊

JPS畫廊始創於二零一四年，主打當代藝術，先後在香港和東京開設畫廊，代理來自世界各地的新晉及知名藝術家。

畫廊旗下的藝術家大玩流行文化，從現代生活文化符號取材，以不同媒介創作出獨特的當代藝術品，趣緻玩味,呈現當代美學。本畫廊不但為新一代藝術家提供自由的創作空間，亦為收藏家提供別樹一幟的藝術品，更為香港藝術品市場帶來緊貼時代潮流的作品。

我們矢志於推動香港和日本的文化與藝術界發展，為本地建立充滿活力的藝術社區。我們會定期為藝術家於香港和東京兩地的畫廊設置展覽，亦會安排他們的作品於國際藝術節展出，讓新晉藝術家得以於國際舞台上嶄露頭角，同時維持知名藝術家在全球藝術市場的熱度。除了貢獻本地藝術界，畫廊亦熱心公益，積極參與和贊助各項慈善和義賣活動以回饋社會。

## 地點

香港中環皇后大道中15號置地廣場2樓218 – 219號

## 媒體查詢及導覽，請聯絡

Angela Tam | [angela@jpsgallery.com](mailto:angela@jpsgallery.com)

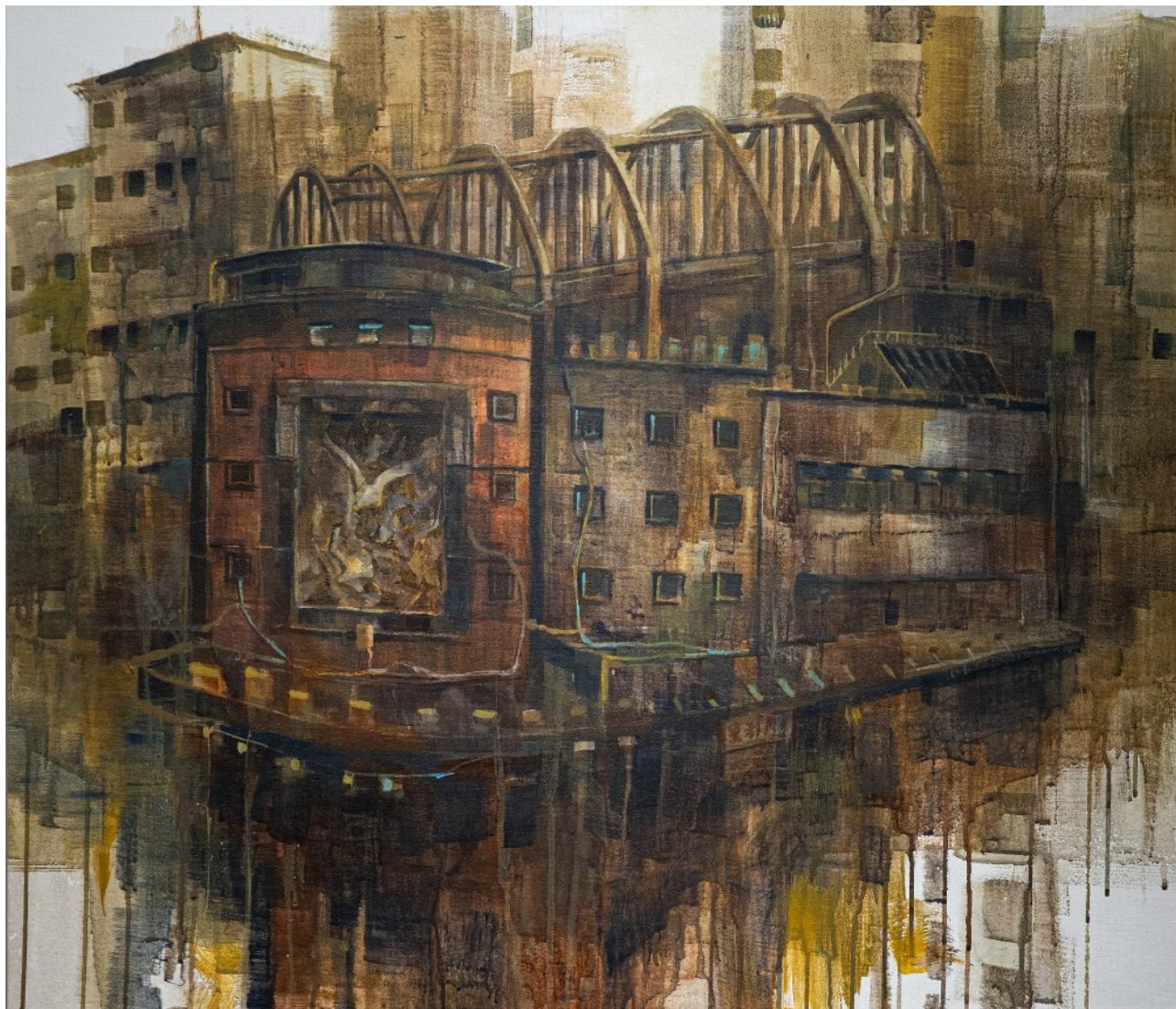
## 社交媒體標籤

[@elainechiuart](#) [@jpsgallery](#) [@jpsartstore](#)

[#jpsgallery](#) [#jpsartgallery](#) [#jpsartstore](#) [#ElaineChiu](#) [#BeforeMemoriesExpire](#) [#趙綺婷](#) [#記憶若有限期](#) [#landmarkhk](#) [#contemporaryart](#) [#art](#) [#exhibition](#) [#artexhibition](#) [#artshow](#) [#hkartist](#) [#watercolorpainting](#) [#acrylicpainting](#) [#architecture](#) [#hongkonglandscape](#) [#hongkong](#)



《記憶若有限期》重點作品 | 2021年5月6日至6月6日  
趙綺婷



**皇都戲院 The State Theatre**

2021

壓克力畫布

68.5 x 80 釐米



《記憶若有限期》重點作品 | 2021年5月6日至6月6日  
趙綺婷



幻想新蒲崗 **Reimagining San Po Kong**

2021

壓克力畫布

82 x 102.8 釐米



《記憶若有限期》重點作品 | 2021年5月6日至6月6日  
趙綺婷



茶果嶺村 *Cha Kwo Ling Village*

2021

壓克力畫布

61 x 53.3 釐米

《回憶圖書館》重點作品 | 2021年5月6日至6月6日  
趙綺婷



醫局街170號 170 Yee Kuk Street

2020

水彩紙本

57 x 38 釐米



《回憶圖書館》 重點作品 | 2021年5月6日至6月6日  
趙綺婷



土瓜灣重建區 *To Kwa Wan Redevelopment Area*

2021

水彩紙本

38 x 57 釐米



《回憶圖書館》 重點作品 | 2021年5月6日至6月6日  
趙綺婷



**霓虹殞落 Fallen Neons**

2020

水彩紙本

38 x 57 釐米