

For immediate release

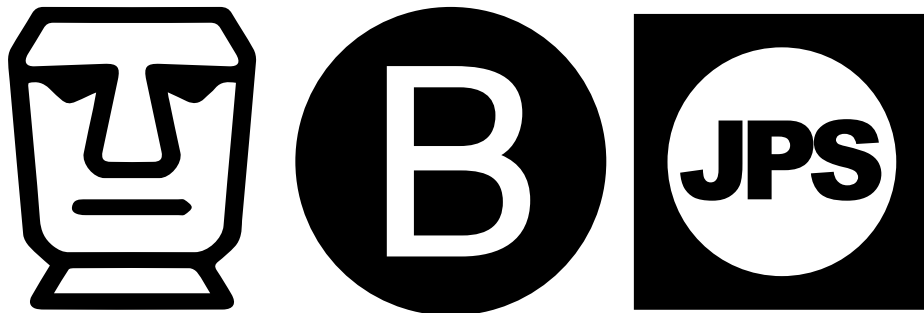
Museum Belowground

Presented by JPS Gallery and BELOWGROUND

Opening Reception: 18 June 2021 | 5pm - 8pm

Public Viewing: 19 June – 1 August 2021

MUSEUM BELOWGROUND



Following the success of *Time Travel*, an immersive visual experience, which brought audiences back to a 1980s era subway station, **JPS Gallery** is pleased to present **Museum Belowground**. The new exhibition, in collaboration with BELOWGROUND, takes inspiration from one of the most well-known universal museums in the world, the British Museum, reimagined as an encyclopedic version fusing the worlds of street, pop, and contemporary art, presenting the Enlightenment Period from a modern perspective.

On view at the BELOWGROUND exhibition space in LANDMARK ATRIUM, the exhibition features sixteen artists working together to present a distinct group of artworks, artifacts and cultural items from around the world in contemporary and novel interpretations: Afa Annfa, August Vilella, Barminski, b.wing, Chino Lam, Elaine Chiu, Horihiro Mitomo, Jorge Mejía, Karla Pereira, Okokume, Okrabelo, Paul Hunter Speagle, Prodip Leung, Pure Evil, Qin Tan, and Yamanyamo.

The recreated display encapsulates the spirit of a universal museum, while injecting new energy in the museum displays, artifacts and cultural relics, building an alternate reality where the works and their biographies are completely different from what we see in art institutions today.

The exhibition invites the audience to explore various sections. Set in the center is a modern recreation of Moai statue from Rapa Nui (Easter Island) with the signature 'tear drip' of street and contemporary artist Pure Evil. The Contemporary Art section displays a wide range of works from local and international artists, hung together in a collage of paintings, both complimenting and juxtaposing one another. In the Ancient Art section, Hong Kong artist Prodip Leung's *Sphinx on the Mars* serves as a manifestation of the artist's interest and exploration of existence of the extraterrestrial beings. Prodip's work incorporates the elements of the ancient civilizations and lives from outer space.

Another major highlight is the recreation of a museum store by Barminski's studio – the *Barminski Art Store* – a life-size paper sculpture installation. The distinctive and visually engaging space brings to light everyday objects repackaged and repurposed forcing the audience to interact with the pieces in a different manner. Even the security guard is a performance artist in disguise, creating another visual and emotional element at **Museum Belowground**.

The exhibition also features an augmented reality (AR) piece presented by award-winning Hong Kong production house Yamanyamo with Prodip Leung. Through scanning a QR code, an interactive mobile application can be launched on smartphones, accessing a hidden feature of *Sphinx on the Mars*. Wrapping the show is an immersive video and sound installation by Qin Tan, a piece which explores the search for identity while raising questions surrounding the concepts of 'authenticity' and 'falsehood'.

Staying true to the rebellious attitude of street art and urban culture, **Museum Belowground** challenges the canonical art conventions and museum display methods, pushing boundaries and reworking traditions.

Participating Artists

Afa Annfa (Hong Kong), is one of the emerging stars in the local art scene. Her works probe the complexities of human emotions and our connection with one another, capturing tensions between the human psyche and worldly materials.

August Vilella (Spain), a self-taught painter who creates oil paintings that open dialogue with contemporary and classical art. Working in the Surrealist automatism method, he creates without any previous sketches or ideas. Each painting has a unique psychical opening and meaning that reflect the subconscious mind.

Bill Barminski (United States), an extraordinarily prolific and influential multimedia artist working across painting, interactive media, and graphic design. He is most known for his paper sculptures of everyday objects, approaching mundane items such as shoes, spray cans and furniture in three-dimensional drawing-like sculptures.

b.wing (Hong Kong), painter and illustrator, b.wing is best known for her signature character A-boy who she created on a piece of toilet paper in 2006. The forever seven-year-old boy has a pair of rabbit ears and dark circles underneath his eyes. As her artistic agent, A-boy reflects b.wing's thoughts and emotions, sharing both of their stories to the world.

Chino Lam (Hong Kong), daringly experiments with traditional mediums such as Chinese calligraphy and Japanese Ukiyo-e by adding contemporary elements to his works, evoking a sense of mismatched aesthetic spiced up with dark humor. In his recent works, Chino explores his fascination with ancient civilizations and post-truth politics, expanding the depth while exploring the possibility of other mediums in his selection of works.

Elaine Chiu (Hong Kong), depicts the urban lives and environments in Hong Kong through watercolor cityscapes. With the fluidic and transparent qualities of the medium, she captures the transience of the light and shadow in Hong Kong's unique street views.

Horihiro Mitomo (Japan), Wabori (和彫り) tattoo master and Ukiyo-e painter, He engages with the traditional Japanese Ukiyo-e in popular culture. Also internationally known as a horoi-shi, tattoo artist, specializing in *Tebori* (手彫り), "hand carved" tattoo.

Jorge Mejía (Honduras) is a multi-disciplinary artist based in Hong Kong. Attempting to blur the line between fiction and reality through traditional media and performance art, where his own characters come to life.

Karla Pereira (Spain), is a pop surrealist known for her doll-like female characters. Her work reflects the beauty and power of femininity and precious creatures, creating a universe where beauty is exemplified through surreal proportions and dreamlike atmosphere.

Okokume (Spain), also known as Laura Mas Hernandez, is best known for her iconic character Cosmic Girl. The pink-haired spirit with turquoise skin is the universe's messenger who emphasizes the importance of protecting the environment. She travels in space and tends to planets in need and restores them to their former glory.

Okrabelo (Spain), uses the contrasting elements of fine art and street art to translate the three-dimensional reality of everyday life into his boldly colored dynamic works. The artist rebelliously questions the inherent beauty standard in the art history canon.

Paul Hunter Speagle (United States), taking inspirations from life, love, and religion, Paul Hunter Speagle creates expressive and colorful works that reflect his passions and beliefs. Working across paintings, sculptures as well as interactive and public installations, Speagle is a versatile artist who explores the world through his work.

Prodip Leung (Hong Kong), painter, illustrator, graphic designer and owner of plant brand Plants of Gods. Prodip Leung is one of the most versatile artists in Hong Kong. His experimental works span across mediums, cultures and philosophies, creating a compelling visual imagery that is populated by mystical creatures, alien civilizations and spiritual beings.

Pure Evil (United Kingdom), a.k.a Charles Uzzell-Edwards, is one of the most prominent names in the street art scene. Approaching popular and political subjects with a Warholesque pop style and graffiti, the artist highlights the rebelliousness of the medium in a critical and satirical undertone.

Qin Tan (United States), painter and video artist. Qin Tan explores the presentation of moving images through video installations and surround sound systems. Bringing an innovative sense in the viewing experience her art is characteristic in its abstract, rhythmic images and movements that often exhibit a combination of delicacy and intensity.

Yamanyamo (Hong Kong), an award-winning Hong Kong based video production house led by two brothers, Mo Chan and Wy Chan. The production house is known for their groundbreaking presentation in television commercials, short films, music and fashion videos. The production house has also gained popularity through their collaboration projects in augmented reality (AR) interactive filters with various artists.

About JPS Gallery

Established in 2014 in Hong Kong, JPS Gallery is an independent contemporary art gallery presenting works of emerging and established artists from around the world.

The gallery is founded with a passionate spirit that dedicates to the new digital age and the exploration of the world of fine art and pop culture. We aim to create an innovative environment for a new generation of artists and collectors, fostering a creative space for all. We focus on fun and playful works of the era that spans across different mediums and disciplines, showcasing a discerning selection of works that embody the aesthetics of today.

We are committed to supporting the culture and art scenes both in Hong Kong and Japan, creating a vibrant local art community. The gallery regularly presents works of emerging artists in our spaces in Hong Kong and Tokyo as well as international art fairs, building a platform to gain global exposure, supporting young artists to launch their careers. JPS has also been an active contributor to society and the local art scene by sponsoring various charity events and auctions.

Location

BELOWGROUND

Basement, LANDMARK ATRIUM, 15 Queen's Road Central, Hong Kong.

For all media and press inquiries, please contact

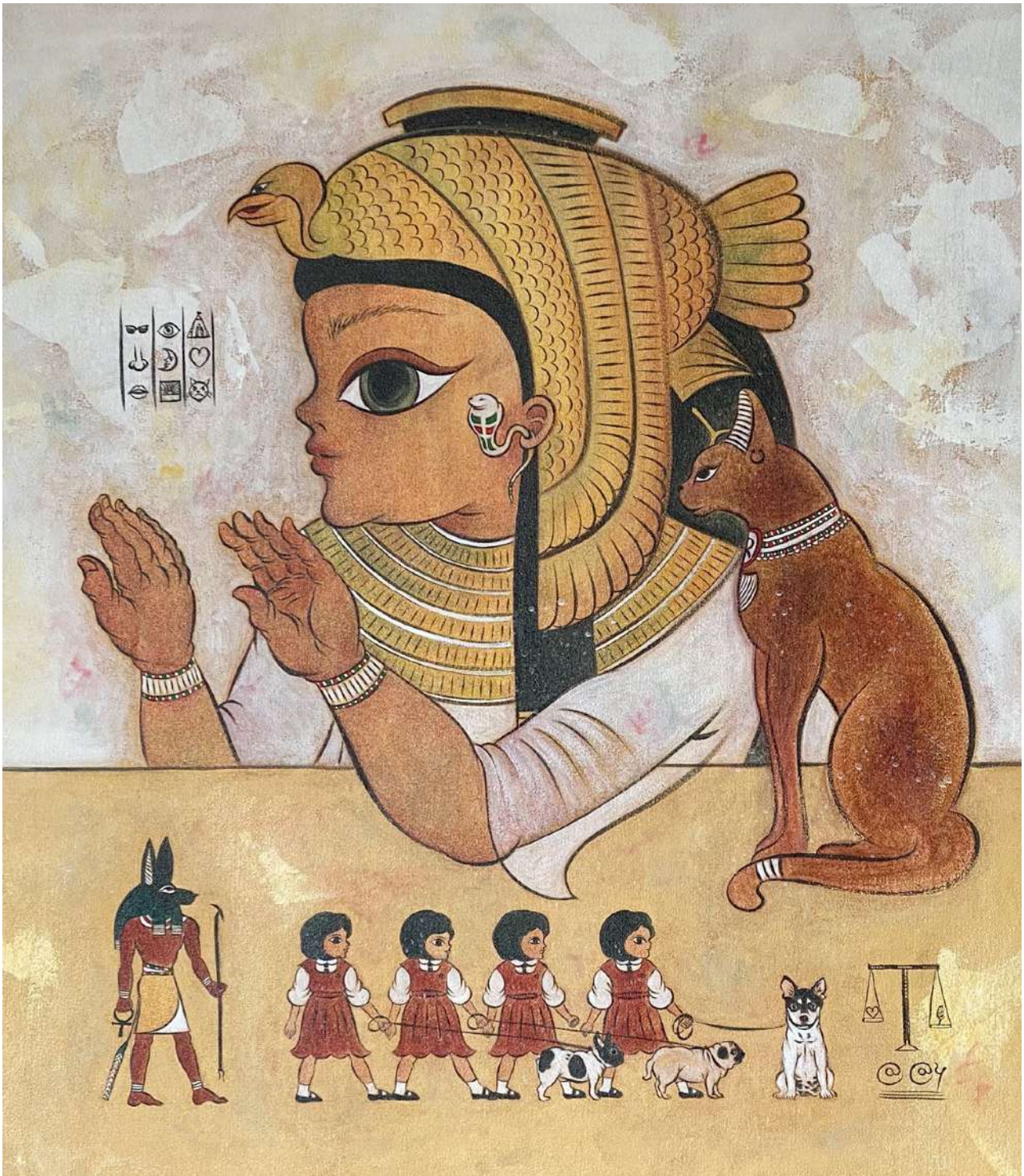
Angela Tam | angela@jpsgallery.com

Social Media Tags

[@jpsgallery](#) [@belowground.hk](#) [@jpsartstore](#)

[@afa_annfa](#) [@august_vilella_art](#) [@barminskiart](#) [@b.wing.wing](#) [@chinolam2016](#) [@elainechiuart](#)
[@horihiro_mitomo_ukiyoe](#) [@mysticusbalatro](#) [@karlapereirart](#) [@okokume](#) [@okrabelo](#)
[@pureevilgallery](#) [@prodipleung](#) [@qinntann](#) [@hunterspeagle](#) [@yamanyamo](#)

[#landmarkhk](#) [#contemporaryart](#) [#art](#) [#exhibition](#) [#artexhibition](#) [#artshow](#) [#hkartist](#) [#streetart](#)
[#museum](#) [#jpsgallery](#) [#jpsartgallery](#) [#belowgroundhk](#) [#jpsartstore](#) [#belowgroundmuseum](#)



AFA ANNFA

Cleopatra and Bastet, 2021

Acrylic and pastel on canvas

74 x 66 cm



BARMINSKI

UFO Incident, 2021

Acrylic paint and hand made cardboard sculpture

Size variable

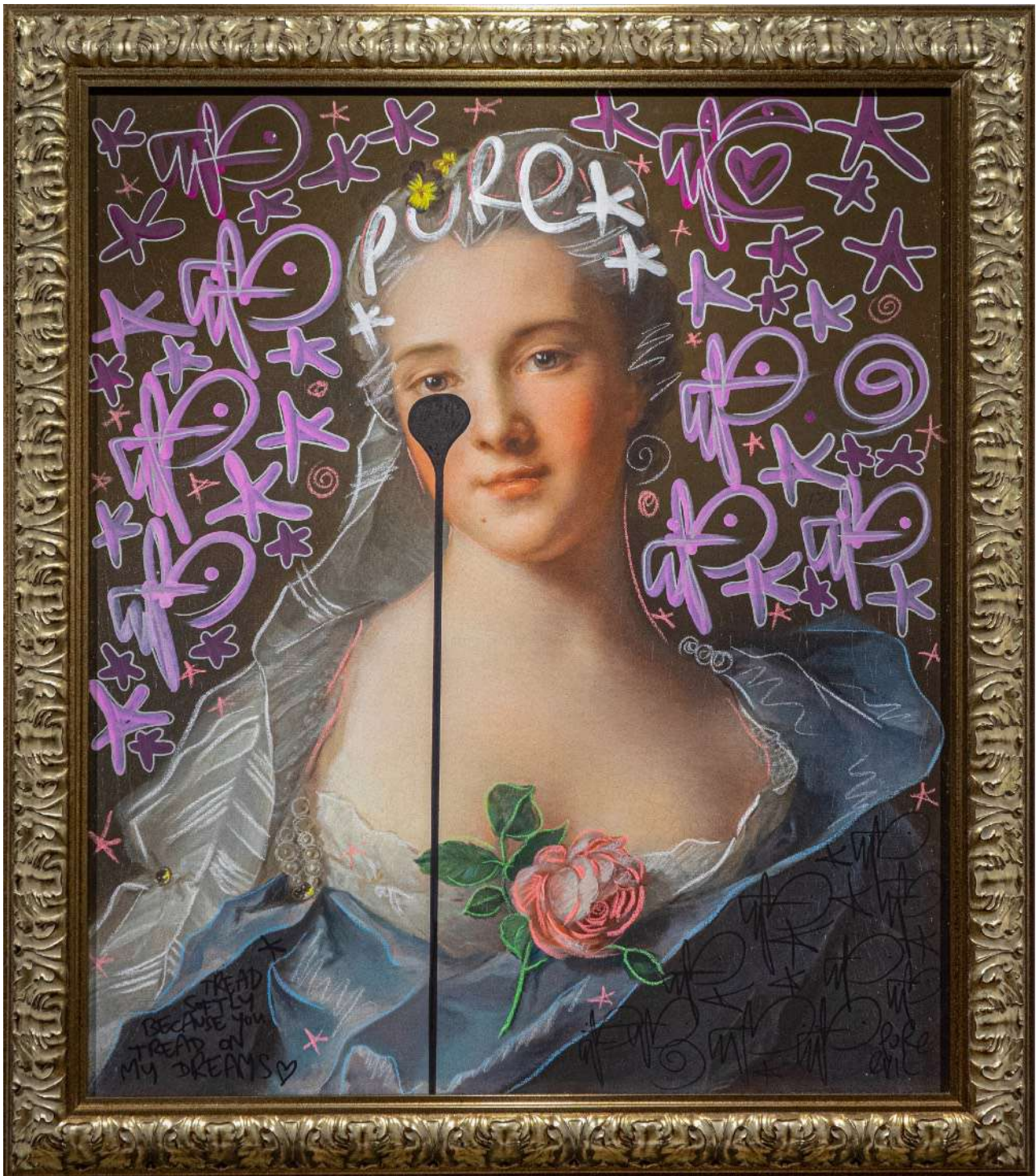


PRODIP LEUNG

Sphinx on the Mars, 2021

Metal and reinforced fiberglass

H134 x W244 x D105 cm



PURE EVIL

Lost Angel, 2021

Hand-finished digital print on canvas

100 x 85cm ; 116.5 x 102cm (framed)



OKOKUME

Giza, 2021

Acrylic and oil pastel on canvas

79.5 x 100 cm

即時發佈

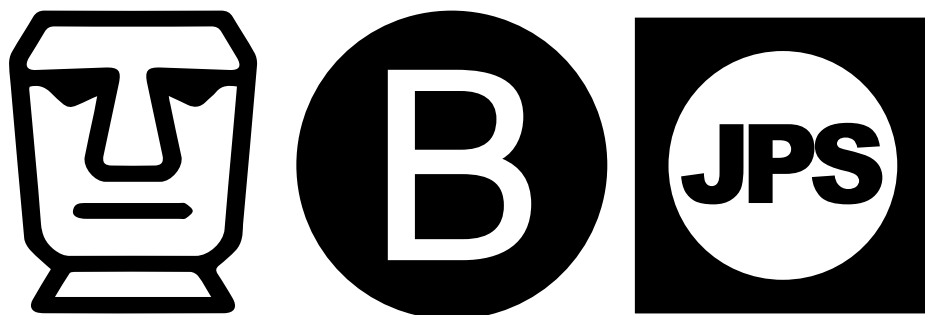
「地下博物館」

JPS 畫廊 x BELOWGROUND

開幕酒會: 2021年6月18日, 下午5時至8時。

公眾開放: 2021年6月19日至8月1日

MUSEUM BELOWGROUND



JPS畫廊承接著「逆時車站」帶觀眾穿越時空回到八十年代的紐約，是次展覽為畫廊 BELOWGROUND合作的第二個體驗展——「地下博物館」。展覽靈感源自倫敦大英博物館，世界上最著名、規模最大的綜合博物館。旨在將街頭文化、流行文化和當代藝術融合於傳統博物館中，讓啟蒙時代的藝術作品及古文物重新展現觀眾眼前。

「地下博物館」將於置地廣場中庭的地下空間（BELOWGROUND）展出。由十六位不同國籍及文化背景的藝術家聯手為大家呈獻一個創新的體驗展。參與的藝術家包括李思汝(Afa Annfa)，August Vilella，Barminski，b.wing，林輝(Chino Lam)，趙綺婷(Elaine Chiu)，Horihiro Mitomo，Jorge Mejía，Karla Pereira，Okokume，Okrabelo，Paul Hunter Speagle，梁偉庭(Prodip)，Pure Evil，譚沁(Qin Tan)，和香港影像製作公司也文也武(Yamanyamo)。展覽承傳了博物館的精神，同時為展示方式和文物注入了新的活力，將傳統文化融入當代藝術元素。

「地下博物館」劃分為多個展區：場內中央位置佈置了一個帶有 Pure Evil 標誌性淚水的復活節島 (Rapa Nui) 摩艾像；當代藝術展區展示來自本地和各國藝術家的作品，同一個空間，卻蘊含著不同的靈魂與色彩；古文明展區以香港藝術家梁偉庭 (Prodip Leung) 創作的大型雕塑《Sphinx on the Mars》為中心作品，該雕塑詮釋藝術家對神秘哲學的體會，並加入古文明及外星文明元素。

除了重新構想傳統博物館的陳列品外，展覽還融合了前衛藝術和創新科技。藝術家 Barminski 以紙板塑造了與別不同的博物館藝術商店 (Barminski Art Store)，把日常生活用品變成極具視覺吸引力的藝術品。為了讓觀眾帶來與紙板藝術品的互動體驗，畫廊邀請了一名表演藝術家擔任護衛員，他將會穿著 Barminski 用紙板製作的護衛制服，在博物館中巡邏，讓藝術品增添視覺及情感元素。展覽還展出了由藝術家梁偉庭 (Prodip Leung) 和香港影像製作公司也文也武 (Yamanyamo) 共同製作的擴增實境 (AR) 作品，參觀者只需掃描館內提供的二維碼，便能從智能電話開啟即時動態互動濾鏡，透過鏡頭進入現實與虛擬結合的藝術世界。展覽以譚沁 (Qin Tan) 的視頻和聲音裝置作為結尾，這是一部探討身份認同的作品，同時也讓人思考「真實」與「謬誤」的哲理。

忠於街頭藝術和文化的反叛態度，「地下博物館」將反轉常規藝術史和博物館的展示方式，挑戰界限並重塑傳統，讓觀眾帶來反傳統的藝術文化體驗。

參與藝術家

李思汝 (Afa Annfa) (香港)，是香港藝術界後起之秀，她擅於刻畫人類複雜細膩的情感和人際關係，捕捉個體心靈與世俗物質之間的角力。

August Vilella (西班牙)，一位自學的油畫畫家，畫作清新脫俗，富有當代藝術與古典藝術色彩。他從不起稿，亦不會預先構思主題，而是把超現實主義隨心融入到油畫當中，因此作品充分反映他潛意識的靈魂思想。

Bill Barminski (美國)，是一位多元化並具影響力的藝術家，擅於利用多種媒體進行創作，如繪畫，互動媒體和平面設計。他創作的紙板雕塑更令他聲名大噪。將日常生活中的物件，如各式各樣的鞋子、塗鴉噴罐和家具等，以立體繪畫的形式製作成雕塑，再用他獨特的表達方式將平凡的物件重新塑造。

b.wing (香港)，二零零六年，b.wing 在一張紙巾上創作出了「A仔」，自此「A仔」成為她最廣為人知的代表作。「A仔」是一個永遠都只有七歲的小男孩，擁有一對黑眼圈和一雙兔耳朵，神情迷惘、天真又憂鬱。b.wing 的作品色彩豐富又充滿童趣，為不少人帶來療癒的正能量。

林輝 (Chino Lam) (香港)，以傳統媒介如浮世繪和書法創作作品。當這些傳統的元素遇上Chino創作的趣怪角色時，便產生出一種荒誕的錯置美學，使這些水生物隱含著詼諧的黑色幽默，也具有街頭文化的風格。他最近的作品以古文明和後真相政治為題材，嘗試拓闊創作媒介。

趙綺婷 (Elaine Chiu) (香港)，城市畫家，她以水彩為媒介描繪出香港的城市風景線。她以畫作及寫生，探討城貌、環境與城市身分的關係。她的畫作渲染出城市的演變，在市區急劇重建下，不斷重置變換的城貌與城市身分，記載香港多變、脆弱、轉瞬即逝的城市面貌。

Horihiro Mitomo (日本)，日式紋身 (和彫り, Wabori) 大師及浮世繪畫家，作品遊走在流行和傳統之間。他亦是國際上著名的紋身藝術家，擅長日式傳統刺青手法手彫 (手彫り, Tebori)。

Jorge Mejía (宏都拉斯)，是一位居於香港的多學科藝術家。他透過傳統媒體和行為藝術，將虛構與現實之間的界線變得模糊不清，把每個角色都演得維肖維妙。

Karla Pereira (西班牙)，是一位以娃娃般的女性角色而聞名的流行超現實主義畫家。她的作品反映了女性獨特的氣質及生物的美麗和力量，創造了一個超現實和夢幻的宇宙。

Okokume (西班牙)，又名Laura Mas Hernandez。代表作是Cosmic Girl系列。Cosmic Girl是一位擁有著粉紅色長髮和藍綠色肌膚的小精靈，負責在宇宙傳遞愛護環境的訊息，並幫助荒蕪的星球回復生機。

Okrabelo (西班牙)，作品融合美術和街頭藝術，利用大膽的對比色彩演繹日常生活的各種立體元素。Okrabelo以這兩種獨特的繪畫手法挑戰藝術史學的美學標準。

Paul Hunter Speagle (美國)，作品色彩豐富而且充滿活力，靈感源自他的日常生活，愛情觀和宗教信仰，充分反映了他對生命的熱情和對信仰的忠誠態度。Speagle擅於利用各種媒體：繪畫、雕塑、互動藝術和公共裝置藝術來創作及探索世界。

梁偉庭 (Prodip Leung) (香港)，畫家、插畫家和平面設計師，近年更主理植物品牌Plants of Gods，是香港最全能的藝術家之一。他的創作橫跨各種媒介、文化和哲學，作品主要圍繞古文明、外星文明和神秘學。

Pure Evil (英國)，又名Charles Uzzell-Edwards，是街頭藝術界最著名的藝術家之一。他的演繹方式受安迪·華荷式的塗鴉和流行風格影響，作品題材帶有諷刺政治意味。

譚沁 (Qin Tan) (美國)，視頻藝術家譚沁通過視頻裝置和環繞聲系統探索活動影像的呈現方式。於聲音和視覺效果上進行實驗，帶來創新的觀看體驗。

也文也武 (Yamanyamo) (香港)，屢獲殊榮的香港映像製作公司，由Mo Chan和Wy Chan兩兄弟帶領。該製作公司以其在電視廣告，音樂視頻，短片和時尚視頻中的突破性展示而聞名。通過與各種藝術家的擴增實境 (AR) 合作項目作品，該製作公司亦於近年廣受大眾矚目和歡迎。

關於JPS畫廊

JPS畫廊始創於二零一四年，先後在香港和日本成立畫廊空間，是一所主打當代藝術的畫廊，代理來自世界各地的新晉及知名藝術家。

畫廊旗下的藝術家大玩流行文化，從現代生活文化符號取材，以不同媒介創作出獨特的當代藝術品，趣緻玩味，呈現當代美學。本畫廊不但為新一代藝術家提供自由的創作空間，亦為收藏家提供別樹一幟的藝術品，更為香港藝術品市場帶來緊貼時代潮流的作品。

我們矢志於推動香港及日本的文化與藝術界發展，為本地建立充滿活力的藝術社區。我們會定期為藝術家於香港和東京兩地的畫廊設置展覽，亦會安排他們的作品於國際藝術節展出，讓新晉藝術家得以於國際舞台嶄露頭角，同時維持知名藝術家在全球藝術市場的熱度。除了對本地藝術界作出貢獻，畫廊亦熱心公益，積極參與和贊助各項慈善和義賣活動以回饋社會。

地點

香港中環皇后大道中15號置地廣場中庭B樓BELOWGROUND

媒體查詢及導覽，請聯絡

Angela Tam | angela@jpsgallery.com

社交媒體標籤

[@jpsgallery](#) [@belowground.hk](#) [@jpsartstore](#)

[@afa_annfa](#) [@august_vilella_art](#) [@barminskiart](#) [@b.wing.wing](#) [@chinolam2016](#) [@elainechiuart](#)
[@horihiro_mitomo_ukiyoe](#) [@mysticusbalatro](#) [@karlapereirart](#) [@okokume](#) [@okrabelo](#)
[@pureevilgallery](#) [@prodipleung](#) [@qinntann](#) [@hunterspeagle](#) [@yamanyamo](#)

[#landmarkhk](#) [#contemporaryart](#) [#art](#) [#exhibition](#) [#artexhibition](#) [#artshow](#) [#hkartist](#) [#streetart](#)
[#museum](#) [#jpsgallery](#) [#jpsartgallery](#) [#belowgroundhk](#) [#jpsartstore](#) [#belowgroundmuseum](#)