

For immediate release

## **Art Central Hong Kong 2022**

May 25 - 29, 2022

Booth B1 and P4, Halls 3FG

JPS Gallery is participating in this year's edition of Art Central in Hong Kong opening on Wednesday 25th May.

In the Chung Dim section (Booth B1) we will feature recent works by (in alphabetical order), Adam Linn (US), Antonio J. Ainscough (US), Arisa Nakahara (JP), b.wing (HK), Dan Oliver (US), Edu Carrillo (Spain), Elaine Chiu (HK), Jackie Lam a.k.a. 009 (HK), Krzysztof Strzelecki (Poland), Maxwell McMaster (US), Muu Nanahoshi (JP), Okokume (Spain), Paul Hunter Speagle (US) and Wilson Shieh (HK). By bringing together a group of local and international artists we are thrilled to offer an intimate representation of identity using abstraction and figuration. At Yi Tai Sculpture and Installation Projects Sector (Booth P4) curated by Qu Chang we will present an installation *The Magical Hoop* by Afa Annfa. Additionally, Hong Kong Art Gallery Association will also be showcasing works by artists Elaine Chiu and Jackie Lam a.k.a. 009 in their annual fundraising exhibition (Booth A28).

### *About The Magical Hoop by Afa Annfa (Booth P4)*

Featured as one of the six large scale projects at Yi Tai, a key highlight of *The Magical Hoop* creates an imaginary scene where the continuous waiting at the laundromat vibrates with Hong Kong emigrants' sense of longing and fatigue in a foreign land. The installation is a magical porthole that connects the street-front laundromat in Hong Kong to a living room in Britain. Under the pressure of high housing prices and unsettling social transformation, both the laundromat and the emigrant's home embody Hongkongers' longing for glimmers of hope and one day returning home. Within the spatial installation, the artist also presents a series of surreal drawings in which a group of young girls travel across different time-spaces through mysterious circular portals, searching for the hope of a new beginning.

**Special Events**

*Artists' and Curator's Talk: Yi Tai Project & Installation Projects*

Thursday, May 26 2022, 4pm

2022 Curatorial Director Qu Chang in discussion with Afa Annfa and artists featured in Yi Tai Project & Installation Projects.

*角度 Gok Dou LIVE: Practices of Cultural Identity by Asia Society Hong Kong Center*

Friday, May 27 2022, 12 - 1pm

From installation to exhibition, how do gallery artists tap into Hong Kong's cultural identity? Back dropped by a hyper-dense population, urban and natural sprawl Angela Yuen, Elaine Chiu and Mark Chung create installation, painting and digital works that peel back an ever-changing landscape. They will take the visitors through their individual practices and mediums affected by the metropolis that is Hong Kong.

**About JPS GALLERY**

Established in Hong Kong (2014) and in Tokyo (2018), JPS Gallery is an independent contemporary art gallery presenting works of emerging and established artists from around the world.

The gallery was founded with a passionate spirit that dedicates to the new digital age and the exploration of fine art and pop culture. We aim to create an innovative environment for a new generation of artists and collectors, fostering a creative space for all. We focus on fun and playful works of the era that span across different medium and disciplines, showcasing a discerning selection of works that embody the aesthetics of today.

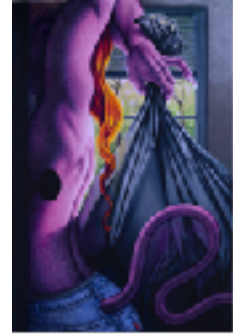
We are committed to supporting the culture and art scene both in Hong Kong and Japan, creating a vibrant local art community. The gallery regularly presents works of emerging artists in our gallery spaces in Hong Kong and Tokyo as well as international art fairs, giving them a platform to gain global exposure and supporting young artists to launch their careers. JPS has also been an active contributor to society and the local art scene by sponsoring various charity events and auctions.

## Participating Artists and Works

### Adam Linn

b. 1995, United States

Adam Linn's drawings depict flamboyant contortions of an anthropomorphic world that probes how seductions can operate in the grotesque and how this relationship mirrors queer self-discovery and intimacy.



**Collector**, 2022. Colour pencil and pastel on paper mounted panel. 91.4 by 61 cm.

### Afa Annfa

b. 1983, Hong Kong

Afa Annfa is one of the emerging stars in the local art scene. Her works probe the complexities of human emotions and our connection with one another, capturing tensions between the human psyche and worldly materials.

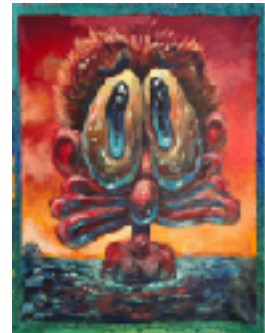


**Home Kong 2**, 2022. Acrylic on linen. 100 by 100 cm.

### Antonio J. Ainscough

b. 1997, United States

Antonio J. Ainscough creates cartoonish figures which he uses as subjects to explore the highs, the lows, and in-betweens that life throws at us. Through narratives, each work explores the possibilities and potential of characters that emulate feelings familiar to us all.



**Extra Cargo**, 2022. Acrylic on canvas. 61 by 45 cm.

### Arisa Nakahara

b. 1984, Okinawa, Japan

Arisa Nakahara filters traditional Japanese ink wash painting techniques through a contemporary cosmopolitan woman sensibility, creating imageries that build from the foundation of traditional Japanese paintings and shed them in the light of the present.



**Circle**, 2022. Acrylic on canvas. 116.7 by 72.7 cm.

**b.wing**

b. 1972, Hong Kong

b.wing is best known for her signature character A-boy. Her works are wistfully meditative, embracing the complexity of our inner psyche with her sentiments and sensitive narratives.



**Mr Children**, 2022. Coarse Grogged Black Clay.  
H15 by W13 by D11cm

**Dan Oliver**

b. 1963, United States

Working with his distinctive abstract painting style, Dan Oliver creates a fantasy world that offers surrealistic commentaries of the world with a rural romanticism undertone.

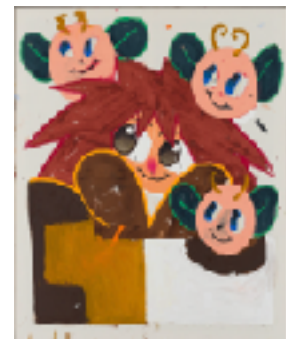


**Philosopher**, 2022. Acrylic on canvas. 61 by 61 cm.

**Edu Carrillo**

b. 1995, Santander, Spain

Through primitive gestures and vivid colour palettes, the sense of energy that Edu Carrillo's works instil in the viewer encourages them to experience the fluidity of forms and flee from the premeditated.



**Fairies**, 2022. Oil, oil stick, acrylic, crayon, marker, graphite and spray on canvas. 162 by 130 cm.

**Elaine Chiu**

b. 1996, Hong Kong

Elaine Chiu explores urban environments' space, memory, and community identity. Her work communicates cityscapes' transient and fragile nature and identity displacement under rapid urban redevelopment.



**SUGAR\_Wonderland: Dreamland 2003**, 2022. Acrylic on canvas. 110 by 145 cm.

**Jackie Lam a.k.a. 009**

b. 1979, Hong Kong

009 engages in the dialogue between reality and fantasy in a distinct international style, exploring philosophy and psychology topics while making frequent references to specific environments and locations.



《銀河修理員》, 2022. Acrylic on canvas.  
200 by 100 cm.

**Krzysztof Strzelecki**

b. 1993, Świdnica, Poland

Krzysztof Strzelecki's influences encompass Christian iconography and ancient mythology. He explores the relationship between man and the environment, highlighting the greatness of the human form's fragility.



**Boys after Bath and Sea Monster**, 2022.  
Glazed stoneware ceramic and platinum lustre.  
H44 by W17 D17 cm.

**Maxwell McMaster**

b. Sacramento, California

Maxwell McMaster synthesises the atmosphere of Los Angeles sunset with his minimalistic canvases. His works often feature a pastel palette and simplified shapes, capturing the Californian golden hour in a dreamy tranquillity.



**Flight of the Silver Butterfly**, 2022,  
Acrylic on canvas, 61 by 61 cm.

**Muu Nanahoshi**

b. 1979, Tokyo, Japan

Muu Nanahoshi's vibrant colour palette, three-dimensional technique and signature dreamy motifs Strawberry Goldfish, Daifukumochis, the Moon and the Ocean bring a unique angle to exploring dreams and realities.

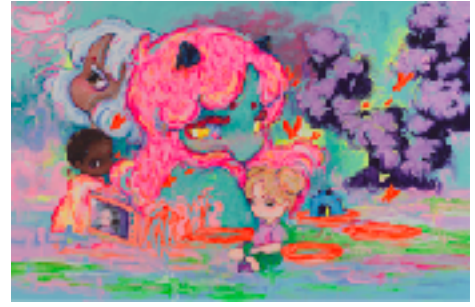


**Rinkle & Ichigone 「Live freely with dreams and hopes」** 夢と希望をもって自由に生きる,  
2022. Acrylic, gel medium and modelling paste on canvas, 130 by 192 cm.

**Okokume**

b. 1985, Barcelona, Spain

Okokume gleeful and colourful works transport the audience into the universe of Cosmic Girl and her companions, preaching the positive messages they believe in. Her cheerful and positive works are met with much popularity, making her one of the fastest growing contemporary artists.



**Nunca**, 2022. Acrylic on canvas. 150 by 230 cm.

**Paul Hunter Speagle**

b. 1982, United States

Taking inspiration from life, love and religion, Paul Hunter Speagle creates expressive and colourful works that reflect his passions and beliefs. Working across paintings, sculptures and public installations, Speagle is a versatile artist who explores the world through his works.

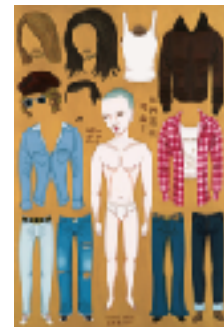


**Hold on Tight**, 2022. Oil, oil bar, acrylic, spray paint, charcoal, white out, graphite on canvas. 126 by 112 cm.

**Wilson Shieh**

b. 1970, Hong Kong

Best known for his figurative paintings, Wilson Shieh uses traditional brushwork techniques to depict themes and narratives derived from the popular culture of East Asia and his immediate environment in Hong Kong.



**Where Did You Die?**, 2010. Oil on canvas. 120 x 80 cm; 124 by 84 cm (framed).

**Main Contact**

Angela Tam | [angela@jpsgallery.com](mailto:angela@jpsgallery.com)

Lulu Liu | [lulu@artcentralhongkong.com](mailto:lulu@artcentralhongkong.com)

**Social Media Hashtags**

@afa\_annfa @paris\_of\_appalachia @ajainscough @arisanakahara.art @b.wingb.wing  
@dan\_oliver\_artist @edwurrdd @elainechiuart @009lifejam @krzysztof\_ceramic  
@maxwellmcmaster @nanahoshimuu @okokume @hunterspeagle @wilson\_shieh\_studio  
@jpsgallery

#AfaAnnfa #AdamLinn #AntonioJAinscough #ArisaNakahara #bwing #DanOliver #EduCarrillo  
#ElaineChiu #JackieLam009 #KrzysztofStrzelecki #MaxwellMcMaster #MuuNanahoshi  
#Okokume #PaulHunterSpeagle #WilsonShieh #jpsgallery #artcentralhk #hongkongart #artfair  
#hongkong #artcentral2022

即時發佈

## **Art Central Hong Kong 2022**

2022年5月25日 – 29日

展位 B1 and P4，展廳 3FG（舊翼）

JPS 畫廊很榮幸能夠參與2022年度香港 Art Central 的多個合作項目。本年度香港 Art Central 的展期為 5月25日（星期三）至5月29日（星期六）。

本畫廊將參展中點主展區（展位 B1），展出世界各地的藝術家作品。參與的藝術家包括（按英文姓名順序）Adam Linn（美國）、Antonio J.Ainscough（美國）、中原亞梨沙 (Arisa Nakahara, 日本)、b.wing（香港）、Dan Oliver（美國）、Edu Carrillo（西班牙）、趙綺婷 (Elaine Chiu, 香港)、Jackie Lam a.k.a. 009（香港）、Krzysztof Strzelecki（波蘭）、Maxwell McMaster（美國）、七星夢海 (Muu Nanahoshi, 日本)、Okokume（西班牙）、Paul Hunter Speagle（美國）和石家豪 (Wilson Shieh, 香港)。

除了中點主展區，藝術家李思汝 (Afa Annfa) 將以大型裝置作品「The Magical Hoop」（展位 P4）參與 Art Central 2022 異體雕塑及裝置項目，「The Magical Hoop」是該項目的六個大型項目之一。另外，藝術家趙綺婷和 Jackie Lam a.k.a. 009 的作品也將會在香港畫廊協會十週年籌款展覽（展位 A28）中展出。

關於李思汝的裝置作品「The Magical Hoop」（展位 P4），創作靈感來自香港的傳統洗衣店和英國的公寓，在李思汝極具想象力的場景中，洗衣店內的等待與異鄉公寓中的渴望與疲憊產生著共情。這是李思汝迄今最大的裝置作品，讓觀眾帶來與藝術品的互動體驗。「The Magical Hoop」裝置作品的其中一個亮點是「神秘通道」，它將一間香港街頭常見的傳統洗衣店與一間英國的公寓連接起來。在城市房價及社會變革的壓力下，香港人對希望的憧憬以及對「歸家」的渴望亦縈繞在洗衣店與異國他鄉的公寓之中。在這件裝置作品中，藝術家亦呈現了一組充滿超現實色彩的繪畫，畫中的女孩透過神秘通道穿行於不同的時空，仿佛在探尋著新希望。



## 特別活動

「藝術家與策展顧問分享會：異體雕塑及裝置項目」

2022年5月26日，星期四，下午4時

2022 策展顧問瞿暢與李思汝和其他參與異體雕塑及裝置項目的藝術家進行分享會。

「角度 現場：亞洲協會的文化認同實踐」

(由亞洲協會香港中心呈獻)

2022年5月27日，星期五，中午12時至下午1時

從裝置到展覽，藝術家是如何將香港的文化融入作品？生活在人口稠密的大城市，本地藝術家趙綺婷、Angela Yuen 和 Mark Chung 分別利用裝置、繪畫和數碼作品，記錄及回憶瞬間萬變的香港景觀，與聽眾分享香港對他們的藝術實踐和媒介運用的影響。

## 關於JPS畫廊

JPS畫廊始創於二零一四年，先後在香港和日本成立畫廊空間，是一所主打當代藝術的畫廊，代理來自世界各地的新晉及知名藝術家。

畫廊旗下的藝術家大玩流行文化,從現代生活文化符號取材，以不同媒介創作出獨特的當代藝術品，趣緻玩味，呈現當代美學。本畫廊不但為新一代藝術家提供自由的創作空間，亦為收藏家提供別樹一幟的藝術品，更為香港藝術品市場帶來緊貼時代潮流的作品。更為香港藝術品市場帶來緊貼時代潮流的作品。

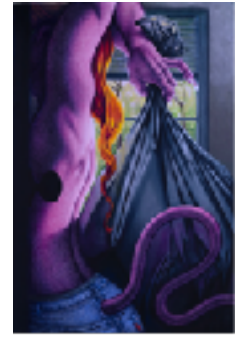
我們矢志於推動香港及日本的文化與藝術界發展，為本地建立充滿活力的藝術社區。我們會定期為藝術家於香港和東京兩地的畫廊設置展覽，亦會安排他們的作品於國際藝術節展出，讓新晉藝術家得以於國際舞台嶄露頭角，同時維持知名藝術家在全球藝術市場的熱度。除了貢獻本地藝術界，畫廊亦熱心公益，積極參與和贊助各項慈善和義賣活動以回饋社會。

## 參展藝術家及其作品

### Adam Linn

1995年出生於美國

Adam Linn 的畫作中的擬人世界充滿著豔麗的顏色和扭曲的線條，在華麗的圖像中探索誘惑物在怪誕裡的效果。



《Collector》，2022年作，彩色鉛筆、粉彩於紙板，91.4 x 61 厘米。

### 李思汝 (Afa Annfa)

1983年出生於香港

李思汝 (Afa Annfa) 是香港藝術界後起之秀，她擅於細膩刻畫人類複雜的情感和人際關係，捕捉個體心靈與世俗物質之間的角力。

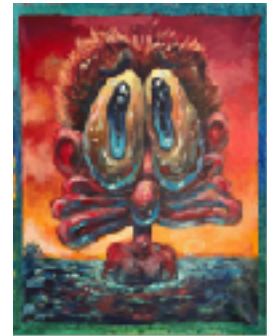


《Home Kong 2》，2022年作，壓克力於畫布，100 x 100 厘米。

### Antonio J. Ainscough

1997年出生於美國

Antonio J. Ainscough 以獨特的卡通主角探索生活中遇到的高潮、低谷和平淡狀態。筆下的人物啟發自為人熟悉的角色，每件作品都展現藝術家的創作潛力及可能性。



《Extra Cargo》，2022年作，壓克力於畫布，61 x 45 厘米。

### 中原亞梨沙 (Arisa Nakahara)

1984年出生於沖繩，日本

在中原亞梨沙繪畫的肖像畫中，透過當代女性的感性角度，展現日本傳統水墨畫的技巧，將東西方文化共融。她的作品以日本傳統繪畫為基礎，並以現代方式呈現。



《Circle》，2022年作，壓克力於畫布，116.7 x 72.7 厘米。

**b.wing**

1972年出生於香港

2006年，b.wing 在一張紙巾上創作了「A仔」，自此「A仔」成為她最廣為人知的代表作。b.wing 的作品鬼馬卻帶點憂鬱，充滿複雜的情感，滿載觸動人心的故事。

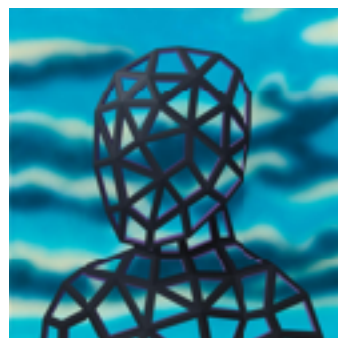


《Mr Children》，2022年作，粗磨黑陶泥，  
15 x 13 x 11 厘米。

**Dan Oliver**

1963年出生於美國

Dan Oliver 以獨特的抽象繪畫風格創造他的奇幻世界。並以超現實主義和鄉村浪漫主義來評論世界。

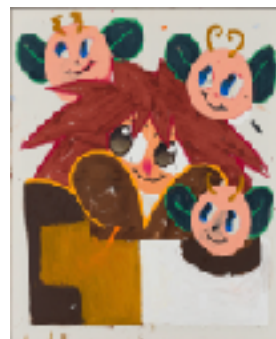


《Philosopher》，2022年作，壓克力於畫布，  
61 x 61 厘米。

**Edu Carrillo**

1995年出生於聖坦德，西班牙

藝術家通過質樸的筆觸和生動的色調，創造一個充滿活力的世界。他筆下的角色都精心打扮，穿上時尚的當代服飾。以輕鬆和純真的構圖，使人心靈療癒的感染力，呈現最純粹的個人情感。

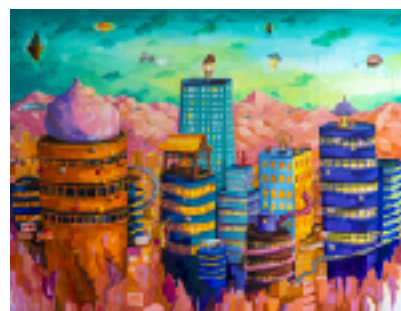


《Fairies》，2022年作，油畫顏料、油畫棒、壓克力、蠟筆、馬克筆、石墨和噴漆於畫布，  
162 x 130 厘米。

**趙綺婷 (Elaine Chiu)**

1996年出生於香港

她的畫作渲染出城市的演變，在市區重建下，不斷重置變換的城貌與城市身分，記載香港多變、脆弱、轉瞬即逝的城市面貌。

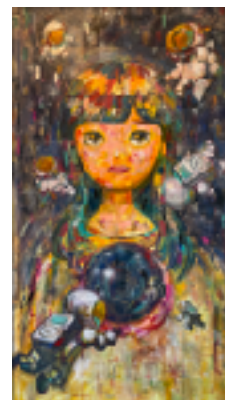


《SUGAR\_Wonderland: Dreamland 2003》，  
2022年作，壓克力於畫布，110 x 145 厘米。

**Jackie Lam a.k.a. 009**

1979年出生於香港

009 嘗試在現實界限中尋找幻想的空間，他的作品取材自哲學和心理學，也偶爾圍繞環境和社會議題創作。



《銀河修理員》，2022年作，壓克力於畫布，  
200 x 100 厘米。

**Krzysztof Strzelecki**

1993年出生於西維德尼察，波蘭

Krzysztof Strzelecki 的繪畫風格受基督教肖像和古代神話啟發，思考人與物的關係，對比自然的偉大與人性的脆弱。



《Boys after Bath and Sea Monster》，  
2022年作，陶瓷釉和光面鉑，  
44 x 17 x 17 厘米。

**Maxwell McMaster**

出生於薩克拉門托，加利福尼亞

Maxwell McMaster 的作品以柔和的調色板，配合簡單的形狀線條，捕捉加州既寧靜又夢幻的黃昏時分。McMaster 筆下的洛杉磯遠離繁忙擁擠的交通和污染的環境，相反以該城市的自然美為靈感。



《Flight of the Silver Butterfly》，2022年作，  
壓克力於畫布，61 x 61 厘米。

**七星夢海 (Muu Nanahoshi)**

1979年出生於東京，日本

七星常以鮮豔的色彩配搭其標誌性的草莓金魚、大福餅、月亮和海洋等夢幻元素，以她獨特的角度去探究生物、現實和夢想，再配合其獨特的三維繪畫技巧呈現在作品中。



《Rinkle & Ichigone 「Live freely with  
dreams and hopes」 夢と希望をもって自由に  
いきる》，2022年作，壓克力、壓克力無酸樹  
脂、塑型膏於畫布，130 x 192 厘米。

**Okokume**

1985年出生於巴塞隆拿，西班牙

她的作品受日本漫畫、美國卡通和街頭文化影響，有著低眉藝術風格。她筆下的 Cosmic Girl 和同伴們都色彩繽紛，活潑開朗，充滿正能量，因此作品大受歡迎，使她成為發展得最快的其中一位當代藝術家。



《Nunca》，2022年作，壓克力於畫布，  
150 x 230 厘米。

**Paul Hunter Speagle**

1982年出生於北卡羅來納州，美國

Paul Hunter Speagle 擅於運用多種媒介創作，包括油畫、雕塑、互動裝置和公共藝術。他的作品色彩繽紛又富表現力，洋溢著生命力、熱情和愛，同時帶有個人宗教信仰色彩。

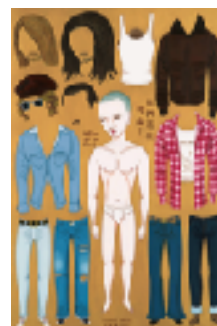


《Hold on Tight》，2022年作，油畫顏料、油畫  
棒、壓克力、噴漆、木炭、塗改液和石墨於畫布，  
126 x 112 厘米。

**石家豪 (Wilson Shieh)**

1970年出生於香港

石家豪以傳統中國工筆技法為繪畫基礎，運用到水墨絹本、壓克力畫布和剪紙拼貼上。透過當代視角呈現傳統水墨藝術。



《Where Did You Die?》，2010年作，油彩畫  
布，120 x 80 厘米; 124 x 84 厘米 (已裱框)。

聯繫人

Angela Tam | [angela@jpsgallery.com](mailto:angela@jpsgallery.com)

Lulu Liu | [lulu@artcentralhongkong.com](mailto:lulu@artcentralhongkong.com)

社交媒體標籤

@afa\_annfa @paris\_of\_appalachia @ajainscough @arisanakahara.art @b.wingb.wing  
@dan\_oliver\_artist @edwurrdd @elainechiuart @009lifejam @krzysztof\_ceramic  
@maxwellmcmaster @nanahoshimuu @okokume @hunterspeagle @wilson\_shieh\_studio  
@jpsgallery

#AfaAnnfa #AdamLinn #AntonioJAinscough #ArisaNakahara #bwing #DanOliver #EduCarrillo  
#ElaineChiu #JackieLam009 #KrzysztofStrzelecki #MaxwellMcMaster #MuuNanahoshi  
#Okokume #PaulHunterSpeagle #WilsonShieh #jpsgallery #artcentralhk #hongkongart #artfair  
#hongkong #artcentral2022