

For immediate release

Sharon Cheung & Jeremy Fung

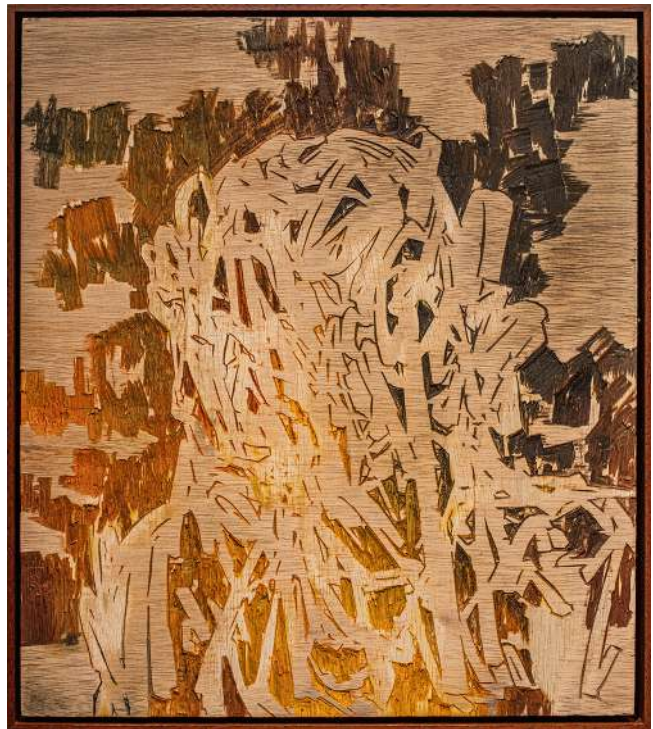
Inhale Courage

13 July - 5 August 2023

Opening Reception: Wednesday, 12 July, 2023, 6 - 9 pm (Artist will be present)



Sharon Cheung, *Portrait No. 1*, 2023, oil on canvas, 42 by 29.5 cm. Courtesy of SC Gallery and JPS Gallery.



Jeremy Fung, *The Old Man* 老人, 2023, oil on wood, 51.5 by 46 cm; 53.5 by 47.5 cm (framed). Courtesy of SC Gallery and JPS Gallery.

In the 1990s, it seemed that the news that accompanied people's growth was mostly positive: China's economy grew rapidly through reform and opening-up; the former Soviet Union dissolved; Ukrainians voted for independence; Germany was unified as one country; democracy spread in Eastern Europe. How about Hong Kong? We were told in 1997 that our lifestyles would not change for 50 years, "horse racing and dancing" would continue for the following years.

Missing those years.

The good times did not continue. History has taken a barbaric turn, and in addition to this, there is the sudden outbreak of a century-old epidemic taking countless precious lives. Why did the hope of the 1990s not continue into the 21st century and what has made the 21st century so dark, regressive, and dangerous?



Despite the uncertainty and chaos, it is fortunate that there are still people who are brave, wise, kind, and willing to love and resist. They are like little stars in the darkness, leading the way for the lost.

This duo exhibition, *Inhale Courage* brings two Hong Kong artists Sharon Cheung and Jeremy Fung to the eyes of the world. The two Hong Kong artists want to pay tribute to leaders from different parts of the world and different fields who have contributed to human civilisation, peace and freedom.

Sharon Cheung excels at portraiture. Portrait painting has always been an important position in art history. The face is an important part of receiving and sending messages, and human expression can provide many clues about the work, including the artist's intended emotions and ideas, the relationships between the characters, and even the atmosphere of the era in which the artist lived.

Jeremy Fung is known for carving on wooden boards to create a natural layering effect revealed through the sharp edges and wood grain interweaving between coarse and delicate lines. This interplay of lines creates a very attractive and intricate image that draws the artist in. He uses abstract forms to depict his emotions and memories on the wooden boards, creating his unique personal emotional diary.

This duo exhibition is going to feature twenty portrait paintings created by the two artists using woodcut and oil painting techniques, documenting their emotional changes. They intentionally distorted their faces, destroying their original structure and chose not to fully present the characters' faces, to express the fear of being unable to speak out in today's society and on topics that cannot be said directly.

About Sharon Cheung

Sharon Cheung started her career as a journalist and is a veteran media person with a sharp insight into Hong Kong Society. People from different walks of life inspire Cheung's paintings, and she believes that only concretisation can express the impulsiveness of one's feelings. Cheung aims to present imagery of one's most authentic emotions through the distortion and demolition of their original appearance. The distorted portraits revealing people's emotions, anxieties, uneasiness and fears reflect society's many facets and ongoing changes.

Cheung obtained her BA degree in Journalism and Communication at the Chinese University of Hong Kong. She is also a fellow of the Reuters Institute for Journalism at the University of Oxford and the founder of "Lion Rock Fellowship" at the University of Oxford. In 2022, Cheung received her Bachelor of Fine Arts (Painting) at the Royal Melbourne Institute of Technology (RMIT) and graduated with first-class honours. She also received the Dean's List Award and the Boon Lee Award. She was one of the six international winners (Asia winner) of the inaugural Art for change



Prize for emerging artists, a competition organised by M&C Saatchi Group and Saatchi Gallery. Cheung's portrait series was also exhibited in the Saatchi Gallery in London. Cheung is the director of a Hong Kong gallery, SC gallery.

About Jeremy Fung

The varying scale and tactile nature of Jeremy Fung's works invite viewers into his world rather than assuming the role of an outsider. Constantly experimenting with new mediums and exploring complex themes such as existence and family, he believes that the dialogue between personal and social knowledge happens through the different coequal forms of grasping and transformation. Fung is observant, critical, and constantly taking inspiration from daily life. His creations are the result of self-examination as well as a way of understanding himself. He believes that his direction in life can be guided by self-confrontation, like Heidegger once said, "There is no absolute distance between our lives and us. We are our life, and the lucidity of our life is the nature of it."

He has exhibited in many local group and solo exhibitions in recent years. Solo shows include *Fibrillation 2023* in SC Gallery; 「物有所思」 in the Gallery by the Harbour in 2021; Fung Mang Chung Solo Exhibition in the Kong Art Space in 2016. Group exhibitions include a duo exhibition, *The Abnormal State* in SC Gallery, 2022; *DOOR* by the SHOPHOUSE in 2021, an artist residency followed by a joint exhibition; the +1 alumni exhibition by the Hong Kong Art School in Pao Galleries in 2021. Fung's works are collected by private collectors and corporates, such as Sun Hung Kai properties.

He graduated from the Art Faculty at the Royal Melbourne Institute of Technology and later received his MA (Fine Art) degree from the Chinese University of Hong Kong in 2016. He is also the winner of the 2014 Australia China Arts Foundation Award.

About JPS Gallery

Established in Hong Kong in 2014 and later in Japan, Paris and Barcelona, JPS Gallery is an independent contemporary art gallery presenting works of emerging and established artists from around the world.

The gallery is founded with a passionate spirit that dedicates to the new digital age and the exploration of the world of fine art and pop culture. We aim to create an innovative environment for a new generation of artists and collectors, fostering a creative space for all. We focus on fun and playful works of the era that spans across different mediums and disciplines, showcasing a discerning selection of works that embody the aesthetics of today.

We are committed to supporting the culture and art scene in Asia and Europe, creating a vibrant local art community. The gallery regularly presents works of emerging artists in our gallery spaces



in Tokyo, Hong Kong, Paris as well as international art fairs, giving them a platform to gain global exposure, supporting young artists to launch their careers. JPS has also been an active contributor to society and the local art scene by sponsoring various charity events and auctions.

Location

12 rue Notre-Dame de Nazareth, 75003 Paris

Media Enquiry

For media enquires and press preview, please contact
Mika Chen | mika@jpsgallery.com

Social Media Hashtags

@sharon_po_wah123 @fung_jeremy @jpsgallery
#InhaleCourage #SharonCheung #JeremyFung #jpsgallery

即時發佈

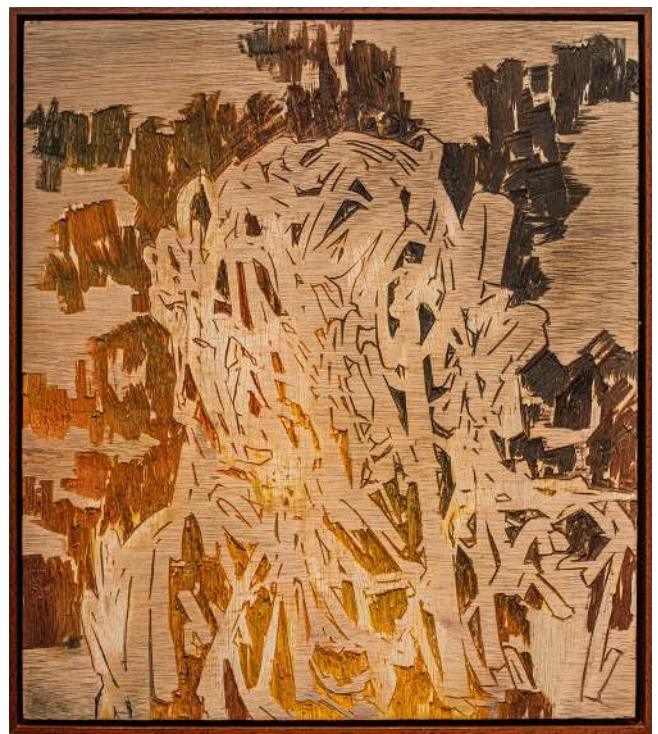
張寶華和馮孟忠聯展 「Inhale Courage」

2023年7月13日 – 8月5日

開幕酒會：2023年7月12日（星期三），下午6時至9時（藝術家將會出席開幕酒會）



張寶華，《Portrait No.1》，2023，油畫畫布，
42 x 29.5 厘米。圖片由 SC 畫廊和 JPS 畫廊提供。



馮孟忠，《The Old Man 老人》，2023，油畫木板，
51.5 x 46 厘米；53.5 x 47.5 厘米（已裱框）。
圖片由 SC 畫廊和 JPS 畫廊提供。

20世紀九十年代，感覺那時候陪伴我們成長的都是好新聞：大陸改革開放，經濟如火車頭一樣發展；前蘇聯解體；烏克蘭人投票支持獨立；兩德統一，民主在東歐的展開……香港呢？人們都說，以後會是「舞照跳，馬照跑」。

很懷念那些年。

之所以這麼說，是因為好時光沒有持續下來。歷史正在向野蠻倒退，不單止，還有橫空而降的世紀疫症，奪去無數寶貴的性命。為什麼上世紀90年代的希望沒有繼續延伸？究竟是什麼讓21世紀變得如此黑暗、退步和危險？



世界變幻莫測，但慶幸還有些人，他們勇敢，睿智，仁慈，敢愛也敢於反抗，他們在黑暗中像點點的星光，給迷失的人們指點方向。

兩位來自香港的藝術家張寶華和馮孟忠希望透過這次聯展「Inhale Courage」向這些曾經為人類文明努力，來自世界不同角落，不同界別，曾經滋潤過你我心靈，讓我們變得更黑白分明，更堅強的領袖們致敬：因為你們的出現，我們不至於迷失。

張寶華擅長對人臉的刻畫。在藝術史中，人像畫一直佔有着一個很重要的位置，人臉是一個收發訊息的主要部位，人物的表情能提供我們許多關於作品的線索，包括藝術家想傳達的情感思想，人物關係，甚至是藝術家身處的時代氣氛等。

馮孟忠一向慣以利刀在木板表面雕刻，利邊和木衣表現出來的天然層次感，那種互相交織，既粗且幼的細膩畫面非常吸引他，藝術家把個人的情感和過去的記憶，以抽象的形式刻劃於木板上，成為他獨特的個人情感日記。

是次聯展這二十張分別以木刻和油彩繪成的肖像畫，記錄了藝術家這段日子的情緒變化，他們都刻意把臉孔扭曲，把它原來的結構破壞，沒有完整地把人物的臉孔呈現，正是要表現出，在當下的社會，有話不能直說的恐懼。

關於張寶華

張寶華曾任新聞記者，是香港資深傳媒人，對香港社會有著敏銳的洞察力。她的創作靈感源自社會各界不同領域的人，她認為只有將抽象的情感具象化才能表達當下的衝動狀態，她的創作透過破壞人臉原本的結構來呈現「情緒的真正形象」，這些扭曲的肖像反映了人們在面對社會變化時，內心的不安、焦慮、徬徨甚至恐懼。

張寶華於香港中文大學的新聞與傳播學系畢業，更是牛津大學路透社新聞研究所學人及牛津大學「Lion Rock Fellowship」的創辦人。她在2022年取得澳洲皇家墨爾本理工大學藝術學士學位，主修繪畫，並以一級榮譽畢業，榮登院長嘉許名單（Dean's List Award）。她曾獲香港藝術學院頒發的 Boon Lee 獎，更獲得由盛世廣告（M&C Saatchi Group）和薩奇美術館（Saatchi Gallery）合辦的首屆新興藝術家藝術變革獎（Art for change Prize），該獎項共有六位國際得獎者，她是亞洲區的得獎者。張寶華的人物肖像畫系列作品也在倫敦的薩奇美術館展出。此外，她還是香港本地 SC 畫廊的畫廊總監。



關於馮孟忠

馮孟忠通過不同尺寸和觸感的作品，邀請觀眾跳出旁觀者的角色，進入他的世界。他不斷嘗試使用新的媒介來探索存在和家庭等複雜的主題。他認為個人與社會知識的對話是通過不同但同等重要的理解和轉化方式來實現。馮氏善於觀察和批判，並不斷從日常生活中獲取靈感。他的創作是自我審視的結果，也是一種了解自己的方式。他相信面對自我才能清楚看到生活自身的方向。如哲學家海德格爾的理論，我們與生活自身之間是沒有絕對的距離。因為我們自身就是生活，對生命的認識和體驗就是生活的本質。

馮氏的作品曾在本地多個群展和個人展覽中展出。個人展覽包括2023年在SC畫廊舉辦的「顫動」；2021年在海港城美術館舉辦的「物有所思」；2016年在KONG藝術空間舉辦的馮孟忠個展。群展包括2022年在SC畫廊的雙人展「不正常狀態」；2021年在大坑藝文空間的進駐計劃及聯展「Door」以及同年在香港藝術中心包氏畫廊舉辦的香港藝術學院Alumni Network展覽「+1」。馮氏的作品被不少私人收藏家和企業收藏（新鴻基地產）。

馮孟忠在2014年取得澳洲皇家墨爾本理工大學（與香港藝術學院合辦）的藝術學士學位，並於2016年在香港中文大學取得藝術碩士學位。他曾在2014年獲得由澳大利亞中國當代藝術基金會頒發的藝術獎項（Australia China Arts Foundation Award）。

關於JPS畫廊

JPS畫廊始創於2014年，先後在香港、東京、巴黎和巴塞隆拿成立畫廊空間，是一所主打當代藝術的畫廊，代理來自世界各地的新晉及知名藝術家。

畫廊旗下的藝術家大玩流行文化，從現代生活文化符號取材，以不同媒介創作出獨特的當代藝術品，趣緻玩味，呈現當代美學。本畫廊不但為新一代藝術家提供自由的創作空間，亦為收藏家提供別樹一幟的藝術品，更為香港藝術品市場帶來緊貼時代潮流的作品。

我們矢志於推動亞洲及歐洲的文化與藝術發展，為本地建立充滿活力的藝術社區。我們會定期為藝術家於香港、東京和巴黎的畫廊空間設置展覽，亦會安排他們的作品於國際藝術博覽會展出，讓新晉藝術家得以於國際舞台嶄露頭角，同時維持知名藝術家在全球藝術市場的熱度。除了貢獻本地藝術界，畫廊亦熱心公益，積極參與和贊助各項慈善和義賣活動以回饋社會。



地點

JPS Gallery Paris, 12 rue Notre-Dame de Nazareth, 75003 Paris

JPS 畫廊 (法國, 巴黎)

媒體查詢及導覽, 請聯絡

Mika Chen | mika@jpsgallery.com

社交媒體標籤

@sharon_po_wah123 @fung_jeremy @jpsgallery

#InhaleCourage #SharonCheung #JeremyFung #jpsgallery



Sharon Cheung 張寶華

Portrait No.3

2023

Oil on canvas
42 by 29.5 cm

2023年作

油畫畫布

42 x 29.5 厘米



Sharon Cheung 張寶華

Portrait No.9

2023

Oil on canvas

42 by 29.5 cm

2023年作

油畫畫布

42 x 29.5 厘米



Jeremy Fung 馮孟忠

The Stranger 異鄉人

2023

Oil on wood

40.7 by 33.2 cm;

43.2 by 35.5 cm (framed)

2023

油畫木板

40.7 x 33.2 厘米;

43.2 x 35.5 厘米 (已裱框)



Jeremy Fung 馮孟忠

Outlier 獨行者

2023

Charcoal on wood

95 by 74 cm;

97 by 76 cm (framed)

2023

炭筆木板

95 x 74 厘米;

97 x 76 厘米 (已裱框)