

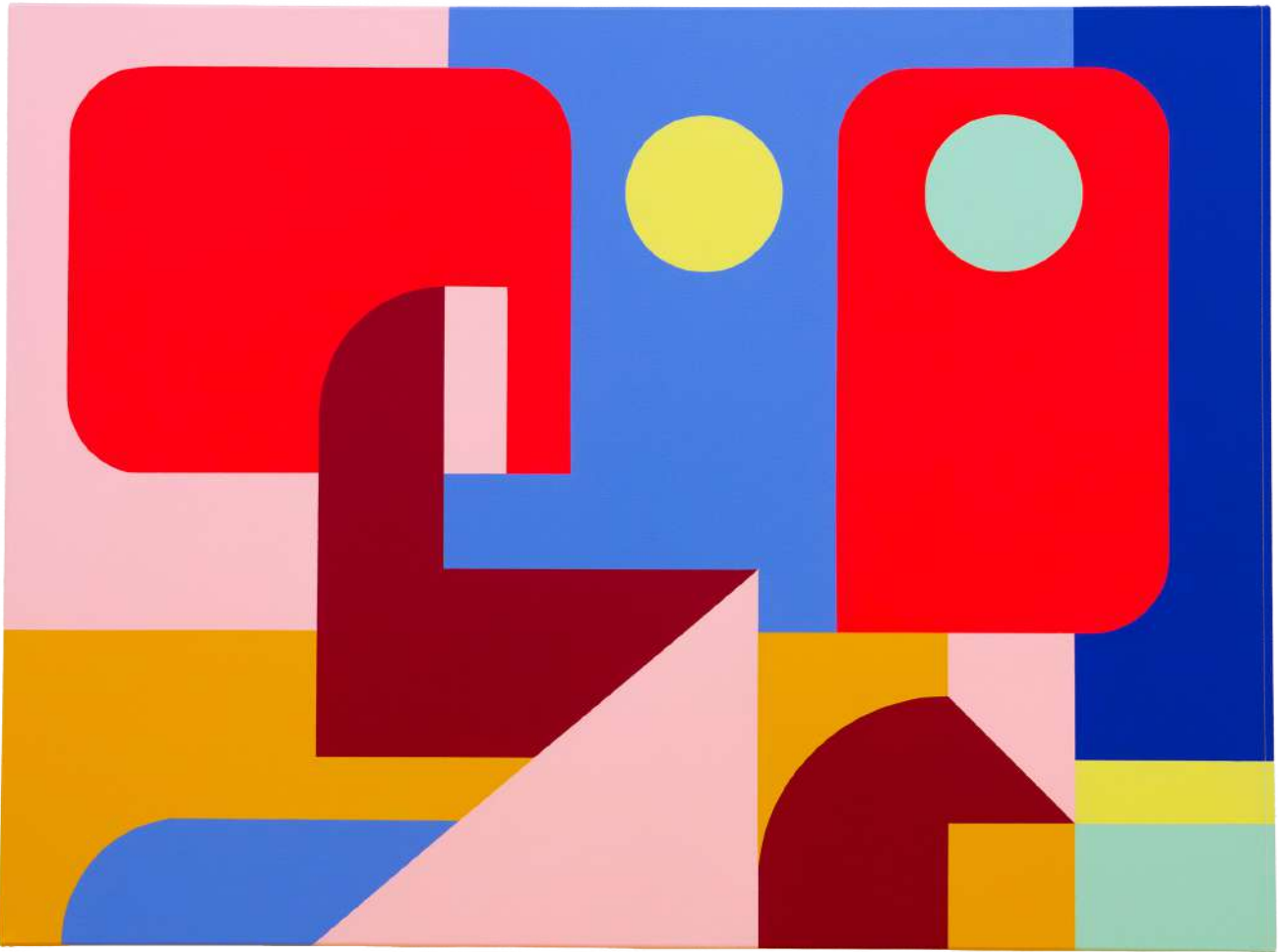


For immediate release

Cynthia Mak ***Joy Palace***

Exhibition Period: 22 March - 20 April, 2024

Opening Reception: Thursday, 21 March, 2024, 5 - 8 pm (Artist will be present)



PENZAI II, 2024, acrylic on canvas, 76 by 102 cm. Courtesy of the artist and JPS Gallery.

Welcome to *Joy Palace*, where ancient Chinese traditions intertwine with modern inspiration, creating a vibrant celebration of love, harmony, and human connection. JPS Gallery proudly unveils the debut solo exhibition of Hong Kong's rising star artist, Cynthia Mak. Her collection of abstract paintings draws from the classic Chinese palace and its intricate settings, narrating Cynthia's artistic journey and mapping out what her inner palace looks like.

For Cynthia, a palace transcends physical dimensions—it's a place where one feels at home, embraces themselves, and enjoy the company of loved ones. Influenced by her Hong Kong roots



and global experiences, Cynthia's latest works reimagine various Chinese elements through abstract shapes and vibrant colours. *Joy Palace* is an imaginary haven for you to journey through the artist's experience over the years. As you explore, let Cynthia's artwork envelop you, leaving you energised and loved.

Inspired by the structure of a traditional Chinese house, the exhibition space is separated into three areas: the front garden, the study and the parlour, each echoing the essence of Chinese architecture, reimaged with contemporary inspiration. As visitors step into the first area, the front garden, they encounter a serene lotus pond—a tranquil oasis. Here, Cynthia's blossoming canvas paintings are exhibited on long stalks, much like flourishing lotus flowers. In Buddhism, the lotus symbolises growth and resilience. Despite murky conditions, the lotus miraculously blooms at daybreak, embodying hope and transformation. The four paintings emerging from the pond represent the virtues of all actions. This serene installation marks the beginning of Cynthia's artistic journey—a reminder to focus on what truly matters by letting go of anything that no longer serves our purpose.

The second space is the study area, where you are invited to enjoy freedom as you explore an open canvas. Scattered paperwork and sketches cover the walls, resembling an extensive mind map. Initially, these shapes and forms may appear random, akin to a child's creation. But with imagination, they hold the potential to become the foundation of an entirely new universe—an artistic playground where ideas take flight.

The exhibition's main attraction is the parlour—a traditional Chinese living room reimaged. Here, people gather, connect, and share joyous sensations. Various Chinese chairs, each with its unique height and style, dot the room. Atop these chairs sit canvas paintings depicting everyday objects found in Chinese homes—landscape scenes, porcelain vessels, plants, and feng shui elements. Cynthia's vibrant abstract style breathes life into these once-static objects, becoming part of the family dynamic she carefully crafts. Visitors are invited to sit on the empty chairs, interact with the paintings like they would with family and friends, and create their own stories—a beautiful fusion of tradition and contemporary expression.

Joy Palace is a pivotal milestone in Cynthia's artistic journey. It encapsulates her core values: creating art that radiates happiness, sparks optimism, and fosters deep connections with loved ones. The concept of "PLAY" permeates the exhibition—a delightful invitation to engage, explore, and immerse oneself. So come play with us and immerse yourself in this euphoric experience that will leave you feeling more energised, loved and happy by the end of your visit.



About Cynthia Mak (B.1987)

Cynthia Mak is an emerging Hong Kong artist who uses art as her creative platform to spread love and joy. Her abstract paintings composed of geometric shapes cleverly arranged into unique compositions have become her signature artistic style. Working with a minimal number of shapes and forms, her endless imaginings and experimentation with line work and colours has resulted in countless picturesque scenes of life exuding a pleasant atmosphere that draws in viewers.

In her early years, Cynthia was not great with her words so she turned to creating visuals as her form of expression. Although it took more effort, she loved the process and was able to explain herself much more clearly through her art. During the pandemic in 2021, Cynthia's passion for art was reignited and she appreciated the total control she had over the entire painting process. Reminded by her younger self who used art to express herself, she decided to embark on a new journey of artistic exploration. Since then, she has exhibited at the M+ Museum Shop and collaborated with Hermès, Lane Crawford and Hong Kong Jockey Club, to list a few, on projects that bring their audience joy and promote a healthy lifestyle.

Cynthia earned her degree at Central St. Martins, London, where she found herself surrounded by truly talented creatives. These talented individuals inspired Cynthia to pursue fashion and eventually create CYNTHIA & XIAO with her good friend Xiao Xiao in 2014. They received widespread recognition and numerous awards for their unique contribution to fashion, including reaching the International WoolMark Prize semi-finals, receiving the HK ELLE Designer award, the Vogue Talents and Tatler Gen T awards, and more. Like her knitwear, Cynthia hopes to use art as a vessel to tell stories, express her endless imaginings, spreading joy and love.

About JPS Gallery

Established in Hong Kong in 2014 and later in Tokyo, Paris and Barcelona, JPS Gallery is an independent contemporary art gallery presenting works of emerging and established artists from around the world.

The gallery is founded with a passionate spirit that dedicates to the new digital age and the exploration of the world of fine art and pop culture. We aim to create an innovative environment for a new generation of artists and collectors, fostering a creative space for all. We focus on fun and playful works of the era that spans across different mediums and disciplines, showcasing a discerning selection of works that embody the aesthetics of today.

We are committed to supporting the culture and art scene in Asia and Europe, creating a vibrant local art community. The gallery regularly presents works of emerging artists in our gallery spaces as well as international art fairs, giving them a platform to gain global exposure, supporting young



artists to launch their careers. JPS Gallery has also been an active contributor to society and the local art scene by sponsoring various charity events and auctions.

Location

JPS Gallery

Shops 218-219, 2/F, Landmark Atrium, 15 Queen's Road Central, Central, Hong Kong

Media Enquiry

For media enquires and press preview, please contact

Zoe Ho | zoe@jpsgallery.com

Social Media Hashtags

@cynthiamakstudio @jpsgallery @landmarkhk

#joypalace #樂宮 #cynthiamak #jpsgallery #landmarkhk

Cocktails Sponsored By



KINSMAN



即時發布

Cynthia Mak

「樂宮」

2024年3月22日 - 4月20日

開幕酒會：2024年3月21日（星期四），下午5時至8時（藝術家將出席）



《PENZAI II》，2024年作，壓克力於畫布，76 x 102 厘米。圖片由藝術家和JPS畫廊提供。

JPS畫廊隆重呈獻新晉香港藝術家Cynthia Mak的首次個展——「樂宮」。Cynthia的抽象畫作受到中國傳統宮殿的風格和其錯綜複雜的結構啟發，描繪出她的內心世界，也見證著她的藝術成長歷程。展覽融合中國傳統和現代靈感，打造一次溫暖、和諧共融的體驗，亦是一場凝聚人與人之間深厚聯繫的活力慶典。

對於Cynthia而言，宮殿的存在超越物理層面的意義，而更多是一種精神寄託。它是一個讓人感覺像家的地方，讓人擁抱自己，感受自我，並享受與摯愛共處的場所。Cynthia的創作植根



於養育她的香港文化，亦受到海外經歷的影響，她的作品運用抽象的形狀和豐富的色彩重新詮釋各種中國元素。「樂宮」就像一個避風港，被充沛的能量和愛包圍，觀眾得以徜徉在Cynthia的作品中，漫遊藝術家多年的心路歷程。

展覽空間以傳統中式建築的佈局為靈感，分為三個區域：前院、書房和正廳。每個區域都透過當代元素重新詮釋，呼應著中式建築的本質。在展覽的第一部分，訪客將踏入門前花庭，遇見一片寧靜的蓮花池。在佛教中，蓮花象徵著成長和韌性。儘管環境混濁，蓮花在黎明時仍奇蹟般地綻放，寓意著希望和轉變。Cynthia的繽紛畫作如同盛放的蓮花，被陳列在高聳的花莖之上。從蓮花池中浮出的四幅畫作象徵著幾種高尚的品德，出淤泥而不染，濯清漣而不妖。這個靜謐的裝置是探索Cynthia創作的旅程開端，它提醒我們捨去無濟於事的雜念，專注於真正重要的事物。

展覽的第二個區域為書房區，觀眾受邀在一片開放的畫布上自由探索。整個空間彷彿一張龐大的思維地圖，牆上佈滿文字草稿和素描線圖。儘管最初這些碎片看來像兒童的隨機創作，但透過想像力，它們擁有構建全新藝術宇宙的潛力，就像一座靈感飛馳的藝術遊樂場。

展覽的焦點集中在正廳區域，這個空間將會呈現一個通過當代語言重新詮釋的傳統中式客廳。在這裡，人們歡聚一堂，共襄盛舉，共享歡愉。各式中式座椅遍佈房間的每個角落，每張都有其獨特的高度和風格。椅子上展示的繪畫生動呈現了中國家庭中常見的裝飾要素——風景、瓷器、植物和風水元素。Cynthia生機勃勃的抽象風格賦予靜物生命，使其融入她精心打造的家。訪客被邀請坐在空置的座椅上，與畫作互動，就像與家人和朋友相處一樣，創造屬於他們的故事。為觀眾帶來一場巧妙融合傳統元素和當代表達的特別體驗。

「樂宮」是Cynthia藝術路上的一個重要里程碑，展覽體現了她的核心價值觀：透過創作傳播快樂與積極正向的精神，並培養與親密至愛的深厚連結。「玩樂」的概念貫穿整個展覽，它鼓勵觀眾參與其中、沉浸式投入展覽，探索其中奧妙。獨樂樂不如眾樂樂，莫不如你與我們同賞，沉醉於這個愉悅的體驗中。相信你在參觀結束時，會收穫更飽滿的活力，感受到愛的共鳴，並在心底留下美好的回憶。

關於Cynthia Mak (1987年生於香港)

Cynthia Mak是一位新晉的香港藝術家，藝術是她展現創作才華的平台，藉此傳播愛和歡樂。她以獨特的構圖理念，將幾何圖形排列，創作獨樹一幟的抽象風格。在Cynthia的幾何畫作中，以有限的造型呈現多變的生活景象，利用線條和顏色組合成富有節奏的畫面。單純的構



圖造型卻蘊含著色彩的藝術、美學的判斷和情感的表現，讓人不自覺地投入她的愉快氛圍當中。

早年的Cynthia不擅言辭，促使她發展視覺語言為表達方式。儘管要付出更大的努力，她卻樂在其中。以藝術作為溝通橋樑，她可以更貼切地表達內在想法。在疫情期間，Cynthia重燃對藝術的熱情。憑著早年與藝術接觸的體驗，她決定踏上藝術創作的旅程。透過繪畫，她可以掌控整個創作過程，為她帶來不一樣的滿足感。她的作品甫登場即備受注目，成為香港M+博物館商店的展示商品，更獲得與Hermès, Lane Crawford和香港賽馬會等大型機構合作的機會。她的創作不僅為觀眾帶來歡樂，並宣揚健康的生活方式。

Cynthia於英國倫敦的中央聖馬丁藝術與設計學院取得學位。受到才華洋溢的同伴們影響，激發出她對時裝設計的熱誠。在2014年，更夥拍好友Xiao創立品牌CYNTHIA & XIAO。憑藉獨特的時尚風格，屢獲殊榮，包括晉身國際羊毛標誌大獎 (IWP) 準決賽，獲得香港ELLE設計師獎、Vogue Talents和Tatler Gen T獎等，對時裝界的貢獻備受肯定。無論是針織設計或是手繪藝術，Cynthia希望以藝術為載體，展現其無窮無盡的想像力，更藉此傳播愛和歡樂。

關於JPS畫廊

JPS畫廊始創於二零一四年，先後在香港、東京、巴黎和巴塞隆拿成立畫廊空間，是一所主打當代藝術的畫廊，代理來自世界各地的新晉及知名藝術家。

畫廊旗下的藝術家大玩流行文化,從現代生活文化符號取材，以不同媒介創作出獨特的當代藝術品，趣緻玩味，呈現當代美學。本畫廊不但為新一代藝術家提供自由的創作空間，亦為收藏家提供別樹一幟的藝術品，更為香港藝術品市場帶來緊貼時代潮流的作品。更為香港藝術品市場帶來緊貼時代潮流的作品。

我們矢志於推動香港及日本的文化與藝術界發展，為本地建立充滿活力的藝術社區。我們會定期為藝術家於香港和東京兩地的畫廊設置展覽，亦會安排他們的作品於國際藝術節展出，讓新晉藝術家得以於國際舞台嶄露頭角，同時維持知名藝術家在全球藝術市場的熱度。除了貢獻本地藝術界,畫廊亦熱心公益,積極參與和贊助各項慈善和義賣活動以回饋社會。



地點

JPS Gallery

香港中環皇后大道中15號置地廣場中庭2樓218-219號舖

媒體查詢及導覽, 請聯絡

Zoe Ho | zoe@jpsgallery.com

社交媒體標籤

@cynthiamakstudio @jpsgallery @landmarkhk

#joypalace #樂宮 #cynthiamak #jpsgallery #landmarkhk

雞尾酒贊助商



KINSMAN



LANDSCAPE IV

2024
Acrylic on canvas
150 by 50 cm

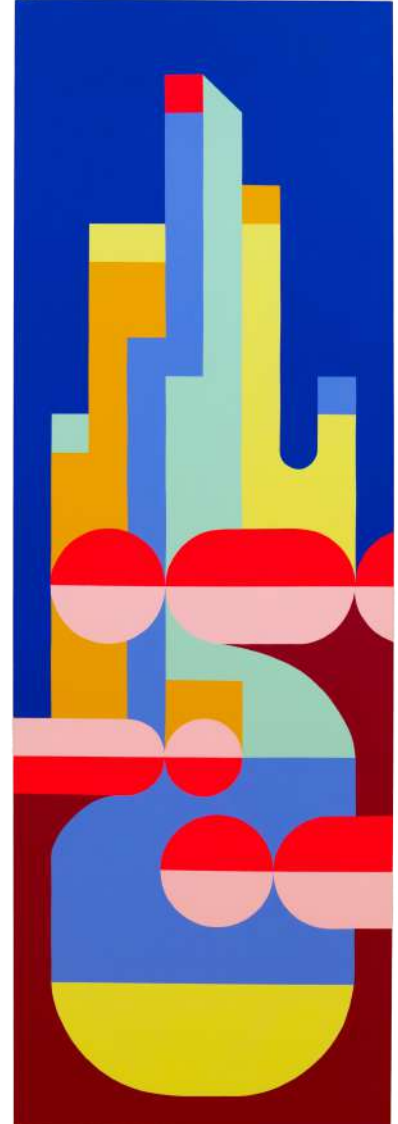
2024年作
壓克力於畫布
150 x 50 厘米



5 FINGER MOUNTAIN I

2024
Acrylic on canvas
150 by 50 cm

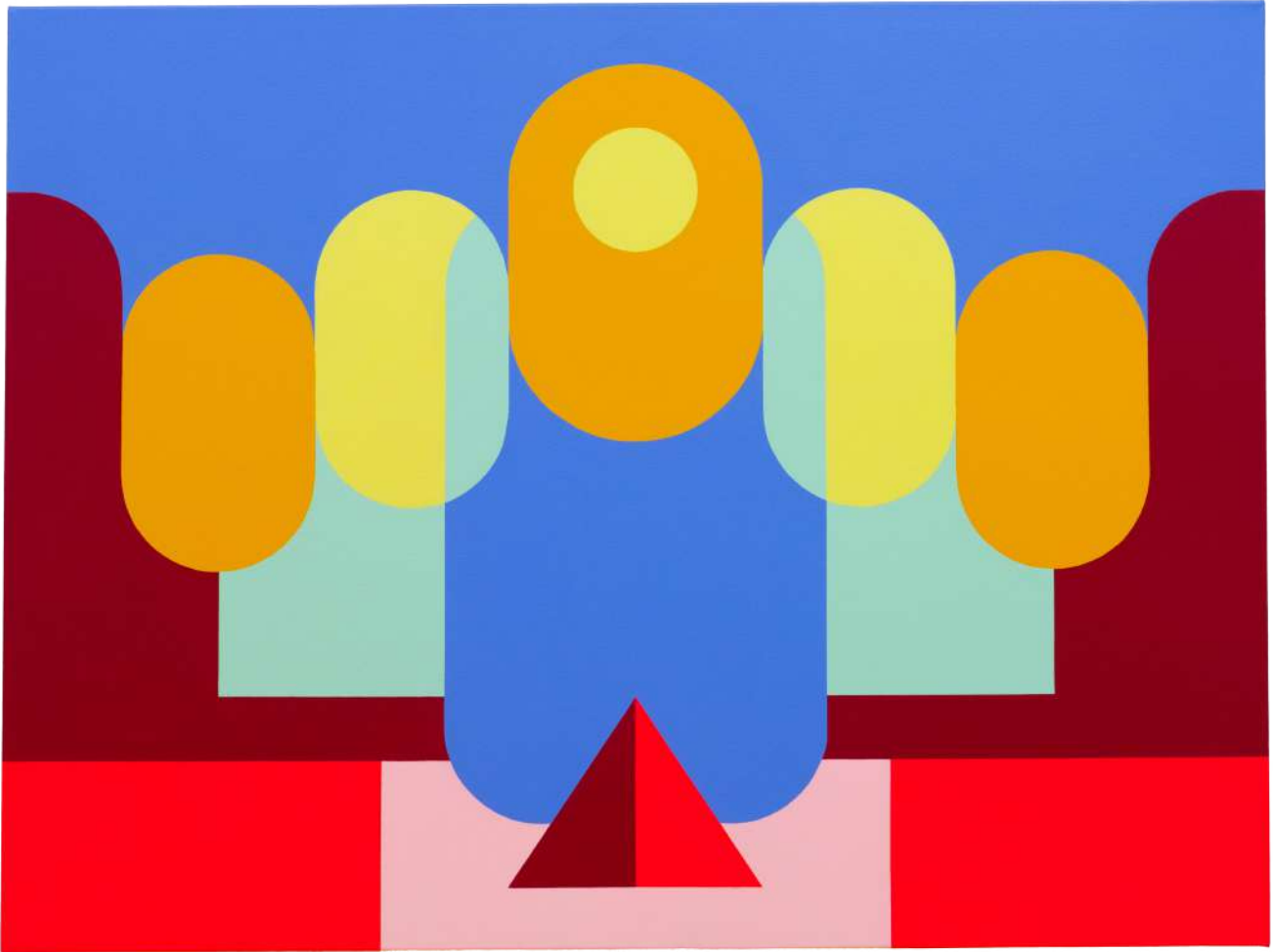
2024年作
壓克力於畫布
150 x 50 厘米



LANDSCAPE V

2024
Acrylic on canvas
150 by 50 cm

2024年作
壓克力於畫布
150 x 50 厘米



PENZAI III

2024

Acrylic on canvas

76 by 102 cm

2024年作

壓克力於畫布

76 x 102 厘米



TEAPOT PORCELAIN

2024

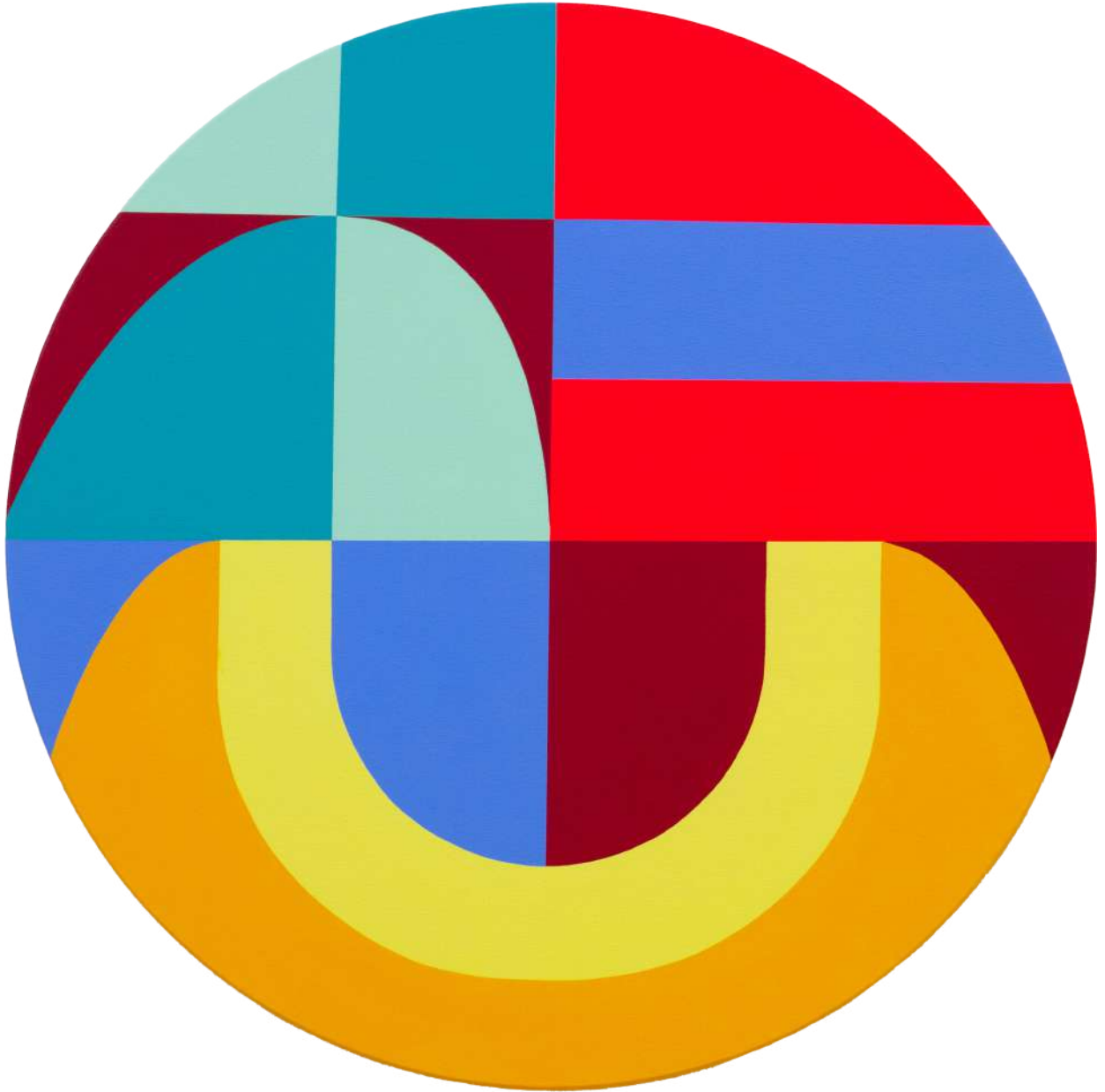
Acrylic on canvas

50 by 40 cm

2024年作

壓克力於畫布

50 x 40 厘米



SOENG / 想 - IDEAS

2024

Acrylic on canvas

60 by 60 cm

2024年作

壓克力於畫布

60 x 60 厘米