

For immediate release

AFA ANNFA x GLORIA CHUNG: A&G Boulangerie

Exhibition Period: January 22 - March 1, 2025

Opening Reception: Tuesday, January 21, 2025, 5 - 8 pm



AFA ANNFA X GLORIA CHUNG
Opening Reception 21/1/25 5-8PM

22/1/25
~
1/3/25





Afa Annfa, *30-Day Love Letter*, 2024. Mixed media (Oil and acrylic on wood panels, pastel, clay with wood powder, plastic), H115 by W136 by D2 cm © Courtesy of the artist and JPS Gallery

"If you're a baker, making bread, you're a baker. If you make the best bread in the world, you're not an artist, but if you bake the bread in the gallery, you're an artist. So the context makes the difference."

—Marina Abramovic

Visual artist Afa Annfa and food stylist Gloria Chung will present their first duo solo exhibition at JPS Gallery Hong Kong. Inspired by an iconic quote from conceptual and performance artist Marina Abramovic, this unique showcase explores the complex relationship between authentic and artificial food, examining their artistic significance and symbolic meanings. The exhibition, titled *A&G Boulangerie*, focuses specifically on bread and butter—staple foods that hold profound cultural significance in our lives.

The exhibition space will be divided into two distinct zones: a meaningful kitchen island in the main room and an altar area that adds a sacred dimension to the everyday act of breaking bread. This dual arrangement fosters an engaging dialogue between the mundane and the divine.



Gloria Chung, *Ribbon*, 2024. Bread with epoxy resin, H27 by W35 by D5 cm © Courtesy of the artist and JPS Gallery



Afa Annfa, *Bread Panel 04*, 2024. Oil, acrylic and pastel on wood panels, clay with wood powder, H23 by W87.5 by D2 cm
© Courtesy of the artist and JPS Gallery

Breaking Bread: From Daily Sustenance to Cultural Canvas

The central area of the gallery will focus on the profound significance of bread, a fundamental element of human sustenance that has been woven into the fabric of civilisations throughout history. Bread, in its many forms, has not only served as essential food for survival but has also evolved into a powerful symbol that goes beyond mere nourishment.

In both Western and Eastern cultures, bread carries deep-rooted symbolic meanings that reflect the essence of human existence—life, sustenance, community, and shared experiences. In Christian traditions, particularly in the Eucharist, bread holds sacred significance as it represents the body of Christ, symbolising unity among believers.

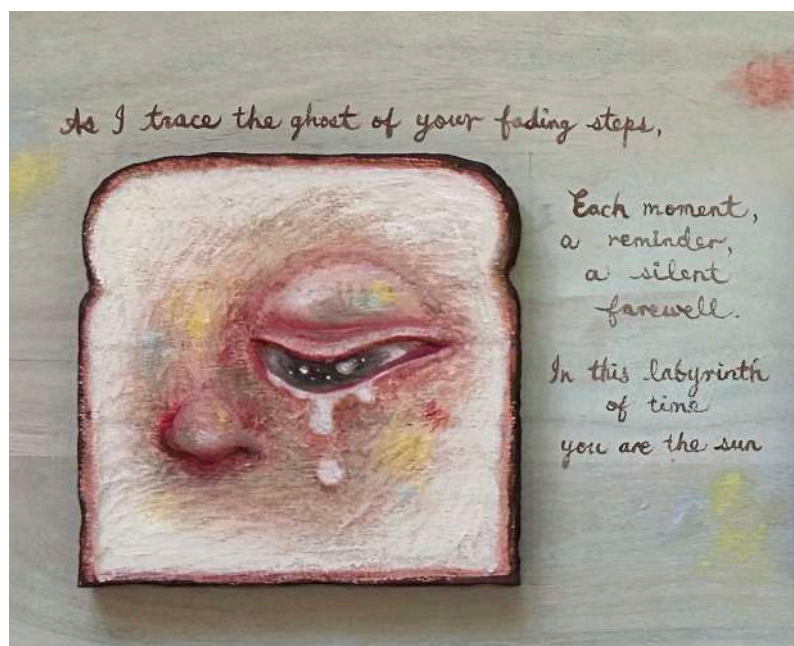
Artists across generations have used bread as a recurring motif in their work, employing it to represent human labour, craftsmanship, and the contrast between abundance and scarcity. The portrayal of bread in various contexts often serves as a subtle yet impactful indicator of social status and economic conditions, highlighting the ongoing reality of societal inequalities and daily struggles.



Afa Annfa, *Bread Panel 07*, 2024. Oil, acrylic and pastel on wood panels, H23 by W68 by D2 cm © Courtesy of the artist and JPS Gallery

Afa Annfa's 30-DAY LOVE LETTER

The main space will comprise two installations: *30-DAY LOVE LETTER* and a meticulously curated kitchen island. *30-DAY LOVE LETTER* is a remarkable fusion of wooden sculptures and paintings by Afa, who uses bread as a multifaceted symbol representing craftsmanship, emotional connection, and spiritual depth. Through a series of intricately carved wooden bread slices, the artist creates a visual narrative that chronicles the evolution of a relationship—from its initial spark to its full bloom, decline, and, ultimately, rediscovery. This piece serves as a deeply personal metaphor in which Afa examines her relationship with artistic creation, essentially composing an intimate love letter to herself and her journey as an artist.



Artwork detail, Afa Annfa, *Bread Panel 08*, 2024. Oil, acrylic and pastel on wood panels, H23 by W68 by D2 cm © Courtesy of the artist and JPS Gallery

Plates with a Purpose: Sculpting Stories of Friendship

The kitchen island showcases a thoughtfully arranged collection of plates, each one telling its own story. The carefully crafted clay sculptures on these plates, which depict pineapples and black ants, symbolise the decade-long friendship between Afa and Gloria. Above the table hangs an impressive chandelier made by Gloria, constructed with real baguettes. This grand installation does more than just serve as decoration; its commanding presence and intricate design invite viewers to contemplate the weight and significance of everyday moments.



Gloria Chung, *Ribbon Serenity*, 2024. Ceramics, H6 by W25 by D4 cm © Courtesy of the artist and JPS Gallery



Gloria Chung, *Light of the Buddha's Hand*, 2024. Dehydrated lemon, fresh bergamot, ribbon, aluminium candle holder, H32 by W29 by D20 cm
© Courtesy of the artist and JPS Gallery

Gloria Chung, *Butter Buddha*, 2024. Butter, H15 by W5 by D8 cm
© Courtesy of the artist and JPS Gallery

Artificial Devotion: Gloria's Butter Guan Yin

This room explores the profound symbolism of butter through two contrasting installations: Gloria's sculpture of Guan Yin made from real butter will be positioned directly across from it is Afa's collection of handcrafted statues, which serves as a monumental tribute to believers.

Butter exists in a fascinating state between solid and liquid, never fully committed to a single form. Its distinctive taste has captivated palates throughout history, yet it serves best as an enhancer that elevates other ingredients to their full potential. Throughout Gloria's distinguished career as both food stylist and chef, butter has held an almost religious significance in her culinary practice. It inspired her to transform butter into a representation of Guan Yin, the Buddhist goddess of mercy, creating a unique fusion of the mundane and divine.

However, during the artistic process, an intriguing paradox emerged: the butter deity, despite its sacred presentation, is fundamentally a human creation—a physical manifestation of the philosophical notion that "gods are born from human imagination." In response to this revelation, Afa created an imposing monument made of artificial butter, deliberately placed in opposition to Gloria's Guan Yin. This juxtaposition raises profound questions: when both pieces are essentially human-made representations, how do we measure the metaphysical distance between the unquestionable divine and the devoted mortal? Through this presentation, the artists delve into complex themes of free will and individual worth, with butter serving as an unexpected yet effective metaphorical vehicle.



Gloria Chung, *Fruits of Sacrifice*, 2024. Apple with sewing pin:
H7 by W7 by D6 cm © Courtesy of the artist and JPS Gallery

Kneading Life's Essence: Afa and Gloria's Artistic Vision

For both Afa and Gloria, the act of creation represents the essence of life itself. They view bread and butter as more than mere sustenance; these elements form the fundamental building blocks of existence, nourishing not only the body but also the spirit, imagination, normalcy, and passion. They suggest that life is composed of countless moments and experiences, much like the infinite variations of bread. Their work implies that approaching life with genuine sincerity and dedication leads to true happiness.

Through this exhibition, the artists transform the common kitchen staple of butter into a powerful medium for exploring deep philosophical and spiritual concepts. The interplay between Gloria's butter deity and Afa's artificial butter sculpture creates a thought-provoking dialogue about faith, human nature, and the relationship between creator and creation. Their work challenges viewers to reconsider their assumptions about the sacred and the mundane, suggesting that profound meaning can be found in even the most ordinary materials when approached with artistic vision and philosophical insight.



Gloria Chung, *Fruits of Sacrifice*, 2024. Orange with sewing pin:
H8 by W8 by D8 cm; Stainless steel cake stand: H15 by W25
by D25 cm © Courtesy of the artist and JPS Gallery



From Dough to Divinity: Artist Sharing Session

Speakers: Afa Annfa and Gloria Chung

Date: February 8, 2025, 3 - 4 pm

Venue: JPS Gallery Hong Kong

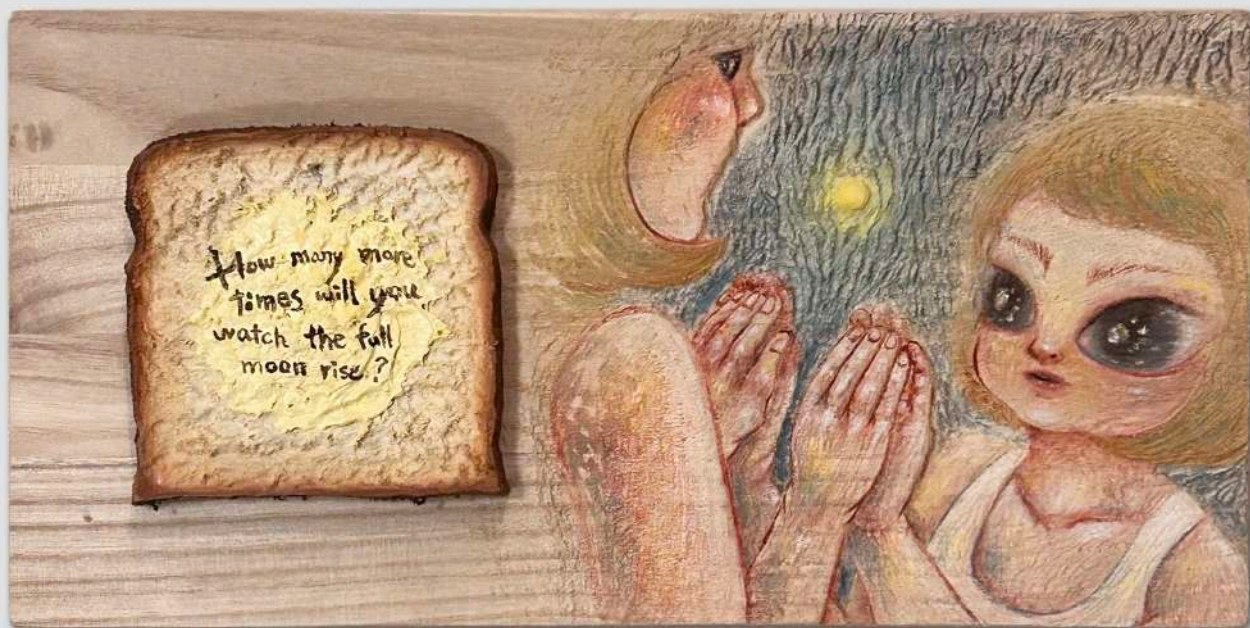
Host: ZTYLEZ Editor Louyi Wong

Language: Cantonese

Join us for an exclusive sharing session where Afa Annfa and Gloria Chung will peel back the layers of their creative process. Discover how ordinary pantry staples transform into extraordinary statements on life, divinity, and everything in between. This exclusive artist talk promises to knead your perceptions, proving that art is truly food for thought!

This event will be [RSVP](#) only. Please email the gallery to make a reservation.

Gloria Chung, *Faux Spread*, 2024. Stainless steel, polyurethane, rhinestones, H4 by W18 by D12 cm
© Courtesy of the artist and JPS Gallery



Afa Annfa, *How Many More Times Will You Watch The Full Moon Rise?*, 2024, Oil on wood panels, H20 by W40 by D2 cm.
© Courtesy of the artist and JPS Gallery

About Afa Annfa (Hong Kong | B.1983)

Born and raised in the bustling metropolis of Hong Kong, Afa Annfa has become a prominent figure in the local art scene known for her contemplative exploration of human interconnectedness in the modern world. Afa's artistic repertoire is as diverse as it is profound. Her signature style features evocative paintings of feminine figures, each brushstroke a testament to her keen observation of the human condition. But Afa's creativity knows no bounds as she seamlessly transitions between mediums over the years, experimenting with ceramics and wood sculptures to give three-dimensional life to her ideas.

Her approach to art is deeply rooted in visceral meditation and observation, with each work reflecting the complex tapestry of societal dynamics. Afa has been driven by an insatiable quest for belonging throughout her career. Her art serves as a visual diary of this journey, chronicling her experiences in the age of social media and exploring the intricate web of relationships between individuals and society at large. Afa's work resonates deeply with viewers grappling with similar questions in an increasingly interconnected yet paradoxically lonely world. Her art becomes a bridge, connecting disparate souls through shared experiences and emotions.

About Gloria Chung (Hong Kong | B.1984)

Gloria Chung is a food and travel journalist, food stylist, and blogger based in Hong Kong. With nearly 20 years of experience, she combines her love for culture and cuisine to tell engaging stories about food.

Starting her career as an editor for a well-known travel magazine, Gloria has contributed to various publications, sharing insights and interviews with renowned chefs. Her work has been featured in notable outlets, celebrating the vibrant culinary scene.

In the digital realm, she shares her culinary adventures on Instagram as FoodandtravelHK, where her authentic approach has garnered a loyal following and recognition as a top food influencer.

As an accomplished food stylist, Gloria studied at RMIT Melbourne and Le Cordon Bleu London, creating visually stunning content that resonates with audiences. She also teaches cooking, believing in the transformative power of real food.

In 2020, she launched The Props Dept, a unique lifestyle props house and food production studio in Hong Kong, where her personal project "Apocalypse Kitchen" reflects her creative journey.

About JPS Gallery

Established in Hong Kong in 2014 and later in Tokyo, JPS Gallery is an independent contemporary art gallery presenting works of emerging and established artists from around the world.

The gallery is founded with a passionate spirit that dedicates to the new digital age and the exploration of the world of fine art and pop culture. We aim to create an innovative environment for a new generation of artists and collectors, fostering a creative space for all. We focus on fun and playful works of the era that spans across different mediums and disciplines, showcasing a discerning selection of works that embody the aesthetics of today.

We are committed to supporting the culture and art scene in Asia and Europe, creating a vibrant local art community. The gallery regularly presents works of emerging artists in our gallery spaces as well as international art fairs, giving them a platform to gain global exposure, supporting young artists to launch their careers. JPS Gallery has also been an active contributor to society and the local art scene by sponsoring various charity events and auctions.

Location

JPS Gallery Hong Kong
G/F, 88 - 90 Staunton Street, Central, Hong Kong

Media Enquiry

For media enquiries and press previews, please contact
Zoe | zoe@jpsgallery.com

Social Media Hashtags

@afa_annfa @afa_leecyu @foodandtravelhk @jpsgallery
#afaannfa #gloriachung #aandgboulangerie #jpsgallery

即時發佈

AFA ANNFA x GLORIA CHUNG: A&G Boulangerie

展覽日期: 2025 年 1 月 22 日至 3 月 1 日

開幕酒會: 2025 年 1 月 21 日 (星期二) , 下午 5 時至晚上 8 時



AFA ANNFA X GLORIA CHUNG
Opening Reception 21/1/25 5-8PM

22/1/25
~
1/3/25





李思汝，《30-Day Love Letter》，2024。混合媒體（油彩、粉彩、黏土與木粉、壓克力及塑膠於木板），115 x 136 x 2 厘米
 © 圖片由藝術家和JPS畫廊提供。

“If you're a baker, making bread, you're a baker. If you make the best bread in the world, you're not an artist, but if you bake the bread in the gallery, you're an artist. So the context makes the difference.”

—Marina Abramovic

視覺藝術家Afa Annfa與食物造型師Gloria Chung首次跨界合作，以行為藝術家Marina Abramovic的名言作引子，把麵包帶進了藝廊，利用真假食物的碰撞，對藝術和食物的本質以及其象徵意義進行了探討。食物之中，又以最生活化的麵包和牛油為主要題材。

展覽空間分為兩個主要區域：1) 中島廚房以及 2) 祭壇。兩個區域分別為平凡的麵包增添神聖的維度，為展覽打開世俗與神聖之間的對話。



Gloria Chung，《Ribbon》，2024。環氧樹脂麵包，27 x 35 x 5 厘米 © 圖片由藝術家和JPS畫廊提供。



李思汝，《Bread Panel 04》，2024。油彩、壓克力及粉彩於木板，黏土、木粉，23 x 87.5 x 2 厘米 © 圖片由藝術家和JPS畫廊提供。

進餐的藝術：從日常食物到文化畫布

1) 中島廚房

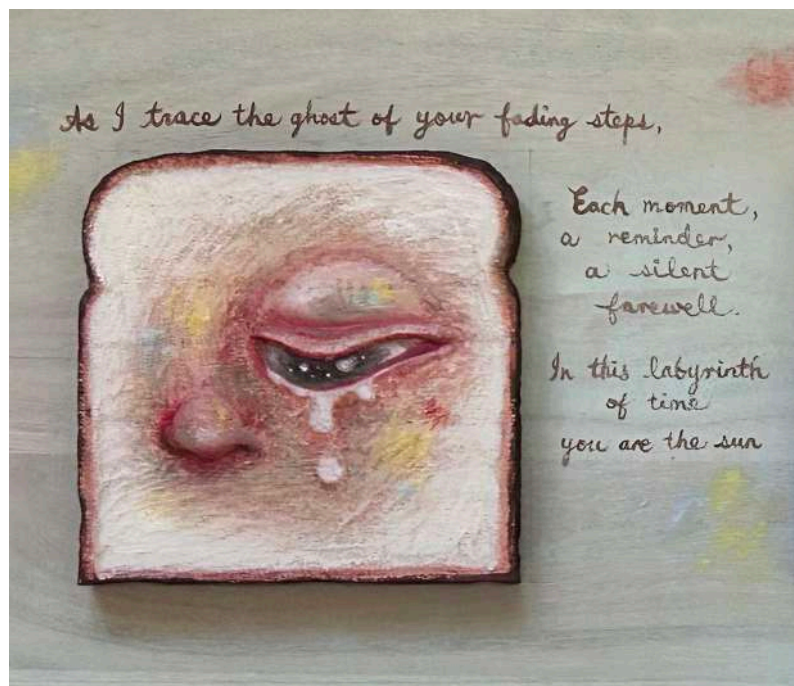
這個區域的主要探討對象為麵包。麵包的歷史悠久，被視為生存的基本食品之一，它代表著生活的重要基石，在中西的歷史或宗教文化中，都有著重要的象徵意義，比如生活與滋養、共享與聯繫，在基督教的聖餐儀式中，麵包代表著耶穌的身體，意味著信徒之間的合一；在不同的藝術作品中，麵包也象徵著人類的勞動和手藝，有時也被用來象徵富裕與貧窮，麵包的出現可能反映出角色的社會地位或生活狀況，突顯社會不平等和艱難的現實。



李思汝，《Bread Panel 07》，2024。油彩、壓克力及粉彩於木板，23 x 68 x 2 厘米 © 圖片由藝術家和JPS畫廊提供。

李思汝的 30 天情書

此區最主要的作品為《30-DAY LOVE LETTER》以及一張中島餐桌。《30-DAY LOVE LETTER》是Afa的木雕和繪畫作品，麵包在她這個作品中象徵著工藝、愛情以及精神生活。藝術家以三十塊木雕麵包，繪製出她的visual diary，紀錄了一段關係從成長、邂逅、熱戀、消亡然後重新發現的過程。以愛情比喻自己跟藝術的關係，也是自己寫給自己的情書。



作品細節，李思汝，《Bread Panel 08》，2024。油彩、壓克力及粉彩於木板，23 x 68 x 2 厘米 © 圖片由藝術家和JPS畫廊提供。

餐碟的意義：見證友誼的雕刻

中島餐桌上放了幾組餐碟，碟上的料理——以黏土製作的菠蘿與黑蟻，是Afa跟Gloria友誼的見證。餐桌上方吊著一盞Gloria以法包製成的、龐大的水晶吊燈。法包吊燈的莊嚴，提醒著我們日常生活的重量及可貴。



Gloria Chung，《Ribbon Serenity》，2024。陶瓷，25 x 6 x 4 厘米 © 圖片由藝術家和JPS畫廊提供。



Gloria Chung, 《Light of Buddha's Hand》, 2024。脫水檸檬、新鮮佛手柑、緞帶、燭臺, 32 x 29 x 20 厘米 © 圖片由藝術家和JPS畫廊提供。



Gloria Chung, 《捨我》, 2024。牛油, 15 x 5 x 8 厘米 © 圖片由藝術家和JPS畫廊提供。

另類的供奉：Gloria 的牛油觀音

2) 祭壇

此區以牛油作為主要探討對象。Gloria創作的牛油雕像《捨我》，以及跟它對立著的、Afa創作的信徒碑為主要作品。

牛油是固體，也是液體，沒有固定的形狀。它的獨特風味讓人欲罷不能，卻偏偏無法作為主角獨立存在，必須依附其他食物，才能發光發熱。在Gloria作為食物造型師/廚師的生涯中，牛油一直擔任著十分重要的角色，於她來說近乎神聖的存在。



Gloria Chung, 《Fruits of Sacrifice》, 2024。
縫紉針於蘋果：7 x 7 x 6 厘米 © 圖片由藝術家和
JPS畫廊提供。

對Afa與Gloria而言，創作即生活。牛油與麵包，是生存的基石、精神的食糧，是想像力，是平淡也是激情。人生就是無數個麵包的總和。認真對待生活，就是幸福的人生。

揉捏生命的本質：Afa 與 Gloria 的藝術視野

但是藝術家們在製作過程中也發現了一個諷刺的事實：牛油作為神的模樣展示於人前，其實也是人為倒模出來的結果——而這也正好呼應了「神的模樣是人類想像出來的」這個說法。作為回應，Afa也製作了一尊高聳的偽牛油信徒碑，跟神聖的觀音祭壇相對而立。既然兩者最終也只是被塑造與想像出來的複製品，那麼在這個層面上，不可挑戰的神與沒有自我的信徒之間的距離，我們又應該如何去判斷呢？在這個區域中，藝術家試圖去以牛油作主題探討自由意志和自我價值的概念。



Gloria Chung, 《Fruits of Sacrifice》, 2024。縫紉針於香
橙：8 x 8 x 8 厘米；不鏽鋼蛋糕架：15 x 25 x 25 厘米
© 圖片由藝術家和JPS畫廊提供。



從麵團到神性：藝術家分享會

講者：Afa Annfa 和 Gloria Chung

日期：2025 年 2 月 8 日下午 3 點至 4 點

地點：香港JPS畫廊

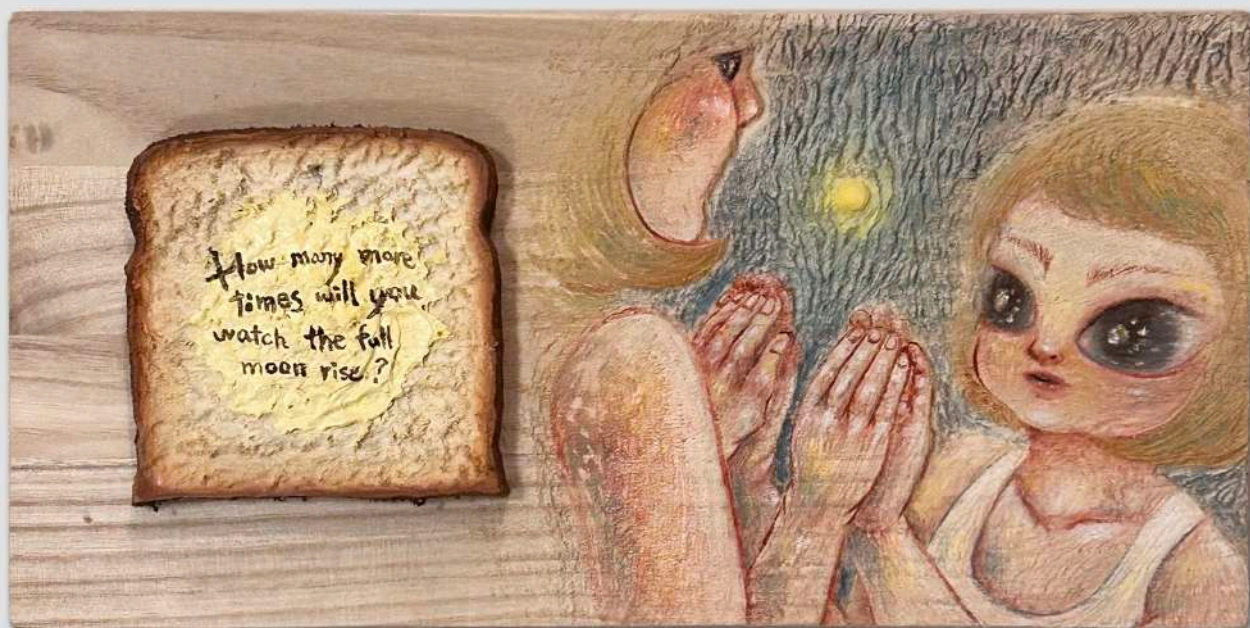
主持人：ZTYLEZ 編輯 Louyi Wong

語言：粵語

兩位藝術家Afa Annfa和Gloria Chung將會透過分享會為你娓娓道來他們的創作過程，探索如何將平凡的主食轉化為對生命、神性以及一切介乎兩者之間的非凡陳述。這場獨家的藝術家講座保證會揉合您的感知，證明藝術是真正的思想食糧！

此活動僅限預約參加。請[電郵](#)給畫廊進行預約。

Gloria Chung, 《Faux Spread》, 2024。水晶石及聚氦酯於不鏽鋼牛油盤, 4 x 18 x 12 厘米 © 圖片由藝術家和JPS畫廊提供。



李思汝, 《How Many More Times Will You Watch The Full Moon Rise?》, 2024。油彩於木板, 20 x 40 x 2 厘米
© 圖片由藝術家和JPS畫廊提供。

關於李思汝（1983年生於香港）

李思汝 (Afa Annfa) 在繁華的香港大都市中出生和長大，她擅於刻畫人類複雜細膩的情感和人際關係，捕捉個體心靈與世俗物質之間的角力，是香港藝術界的傑出新秀。Afa的藝術才華既豐富又深刻，她的標誌性風格是令人回味的女性人物繪畫，每一筆都證明了她對人類狀況的敏銳觀察。憑藉無限的創造力，多年來不斷地探索各種媒介的可塑性，近來嘗試以陶瓷和木雕為她的想法賦予三維生命。

她的藝術創作植根於內心的冥想和觀察，每件作品都反映著複雜的社會動態。在她的整個職業生涯中，Afa一直對歸屬感有著永不滿足的追求。她的藝術就像這段旅程的視覺日記，記錄社交媒體時代的經歷，並探索個體與群體之間錯綜複雜的關係。她的作品令人產生強烈共鳴，現代人都生活在彷彿相互聯繫卻又矛盾地孤獨的世界中，重重複複地解決類似的問題，她的藝術便成為一座橋樑，透過共同的經驗和情感連結不同的靈魂。

關於Gloria Chung（1984年生於香港）

Gloria Chung是資深的飲食及旅遊記者，對飲食文化和烹調方法有深入研究，曾訪問不少名廚；她同時也是香港少數的食物造型師，曾在澳洲墨爾本RMIT大學及倫敦的藍帶學院學習食物造型，為各大品牌設計，廣告客戶包括五星酒店、國際品牌、超市等等；Gloria熱愛烹飪，曾在多間機構教授烹飪課程，以及設計食譜。

2020年，她創立了生活道具屋和食品製作工作室The Props Dept，她與不少攝影師作跨界合作，作品包括與攝影師Mike Pickles創作的「末日廚房」及與攝影師Theodoric Wong創作的「亞洲食材」系列。

關於JPS畫廊

JPS畫廊創立於2014年，先後在香港和東京成立畫廊空間。是一所主打當代藝術的畫廊，代理來自世界各地的新晉及知名藝術家。

畫廊旗下的藝術家大玩流行文化，從現代生活文化符號取材，以不同媒材創作出獨特的當代藝術品，趣緻玩味，呈現當代美學。本畫廊不但為新一代藝術家提供自由的創作空間，亦為收藏家提供別樹一格的藝術品，更為香港藝術品市場帶來緊貼時代潮流的作品。

我們矢志於推動亞洲與歐洲的文化與藝術發展，為本地建立充滿活力的藝術社群。我們會定期為藝術家於JPS的畫廊空間設置展覽，亦會安排他們的作品於國際藝術博覽會展出，讓新晉藝術家得以於國際舞台嶄露頭角，同時維持知名藝術家在全球藝術市場的熱度。除了貢獻本地藝術界，畫廊亦熱心公益，積極參與和贊助各項慈善和義賣活動以回饋社會。

地點

香港中環士丹頓街88-90號地下

媒體查詢及導覽，請聯絡

Zoe | zoe@jpsgallery.com

社交媒體標籤

@afa_annfa @afa_leecyu @foodandtravelhk @jpsgallery
#afaannfa #gloriachung #aandgboulangerie #jpsgallery