

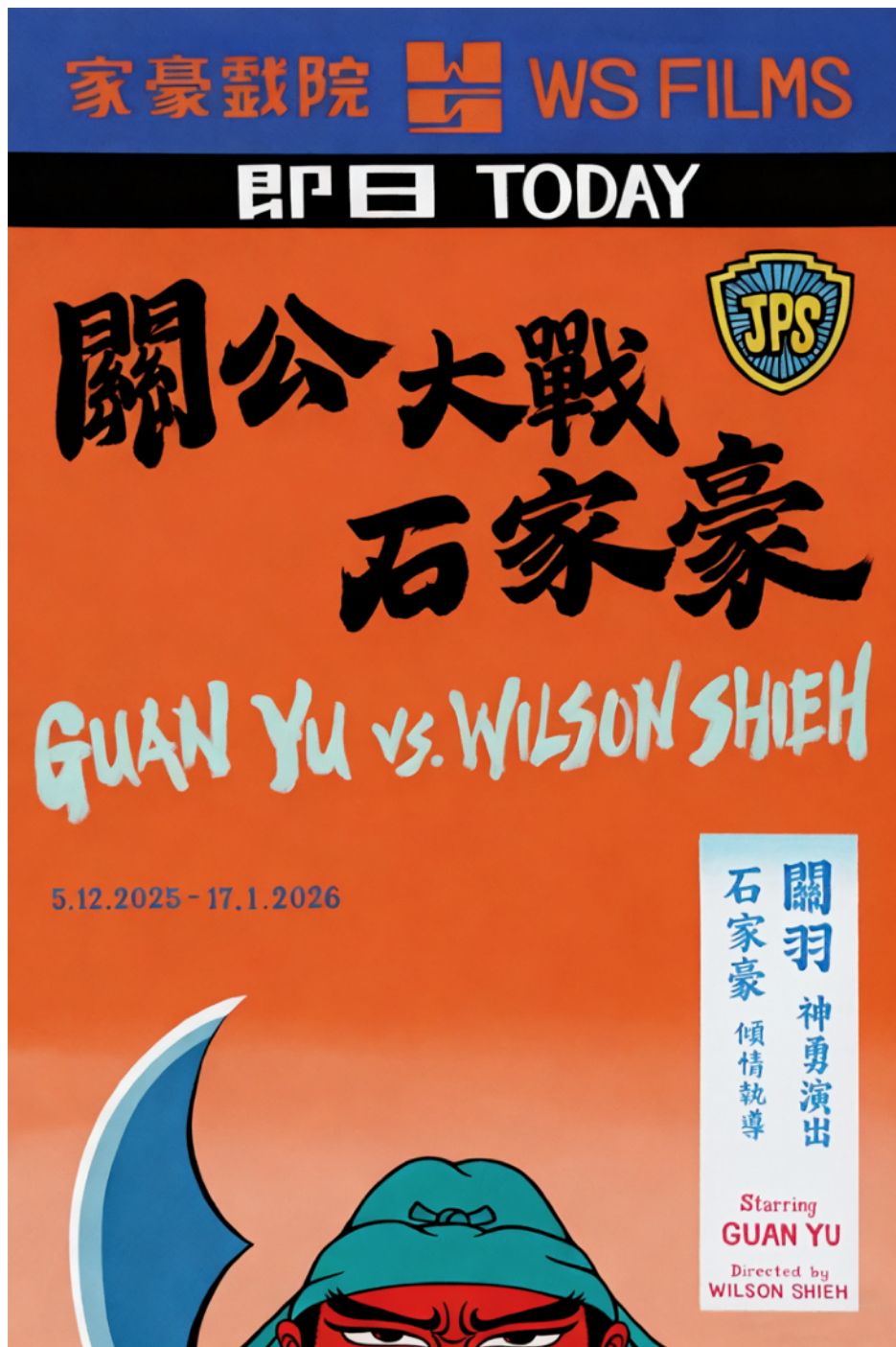
For immediate release

WILSON SHIEH SOLO EXHIBITION: GUAN YU VS. WILSON SHIEH

Exhibition Period: December 5, 2025 - January 17, 2026

Opening Reception: Thursday, December 4, 2025, 5 - 8 pm

Artist Tour: Saturday, December 13, 2025, 3 - 4 pm



Wilson Shieh, *Guan Yu vs. Wilson Shieh* (Poster) 關公大戰石家豪 (海報), 2025, acrylic on canvas, 90 by 60 cm © Courtesy of the artist and JPS Gallery



Hong Kong's Most Electrifying Art Showdown: Guan Yu vs. Wilson Shieh

Prepare to be swept away into an extraordinary world where timeless legend collides with trailblazing contemporary art! JPS Gallery Hong Kong is thrilled to unveil "Guan Yu vs. Wilson Shieh", an exhilarating solo exhibition by Hong Kong's visionary artist Wilson Shieh. At its heart beats the fierce spirit of Guan Yu (160-220 AD), the iconic warrior deity from the Three Kingdoms era, reimagined through Shieh's innovative lens.

Exhibition Rendering (for reference only) © Courtesy of the artist and JPS Gallery





Exhibition Rendering (for reference only) © Courtesy of the artist and JPS Gallery



Wilson Shieh, *The Cut of Guan Yu* 關公斷, 2025, oil on canvas, 50 by 40 cm © Courtesy of the artist and JPS Gallery

Here, Shieh's signature architectural figures, cloaked in the silhouette of Hong Kong's landmark buildings, roar to life as mighty warriors wielding traditional Chinese weapons. This mesmerising experience extends beyond traditional gallery viewing—featuring a meticulously recreated vintage cinema environment and groundbreaking AI-generated film that brings these painted warriors into stunning animated battle.



Film still from *Guan Yu vs. Wilson Shieh* (2025) © Courtesy of the artist and JPS Gallery



Wilson Shieh, *Goddess of Plastic Blades* 膠劍女神, 2025, acrylic on canvas, 75 by 60 cm © Courtesy of the artist and JPS Gallery

Step into the Cinema: AI Ignites an Epic Battle

Traverse a corridor where nostalgia dances with innovation — walls lined with Shieh’s vivid, original paintings capture the spirit of Hong Kong’s cinematic heyday from the late 1970s to the early 1990s. These masterful works replace classic film posters, setting the stage for a one-of-a-kind cinematic spectacle.

Beyond lies the fully equipped movie theatre, home to a pioneering AI-generated short that breathes movement and drama into the fierce confrontation between Guan Yu and Shieh’s architectural heroines. Witness history and mythology collide with the imagination of a fearless contemporary artist — all amplified by the power of next-gen technology.



Wilson Shieh, *The Tears of Guan Yu* 關公哭 (left) and *The Hurt of Guan Yu* 關公傷 (right), 2025, oil on canvas, 50 by 40 cm
© Courtesy of the artist and JPS Gallery

The Artistic Evolution: From Urban Elegance to Warrior Majesty

Shieh takes a fearless leap into new artistic territory. His once serene figures, symbolic of Hong Kong's refined urban essence, now surge forward as armed warriors brandishing ancient weapons with commanding presence. Through exquisite brushstrokes and vivid hues, Shieh reinvigorates his celebrated fine brush painting technique, forging a stunning bridge between tradition and modernity.

“After decades of studying Chinese fine-brush paintings and practising gongbi, I realised I hadn't truly explored Guan Yu's imagery,” Shieh reveals. This awakening propelled him into a profound journey through the legendary general's saga—whose story of bravery and loyalty has echoed for nearly two millennia. Shieh captures this epic transformation, reinterpreting an age-old hero for the modern age with a narrative rich in courage, power, and pathos.



Wilson Shieh, *General Guan Yu on Hollywood Road (April 2024 version)* 荷李活關雲長（甲辰年二月版），2024, oil on canvas, 140 by 100 cm © Courtesy of the artist and JPS Gallery

Inspired by a Cult Classic, Reborn for Today

Adding a playful twist, the exhibition channels the offbeat energy of the 1976 Taiwanese cult film “War of God,” famously known as “Guan Yu vs. Aliens.” This wonderfully wild story, featuring the deity battling extraterrestrials in Hong Kong’s bustling Central district, charmed pop culture fans with its audacious imagination. Today, Shieh takes this spirit further, placing Guan Yu in an electric face-off against his own architectural creations — turning the entire exhibition into a bold cultural critique and a triumph of innovative artistry.



Wilson Shieh, *Xiqu Centre 戲曲中心*, 2025, acrylic on canvas, 50 by 40 cm © Courtesy of the artist and JPS Gallery

**Bridging Tradition and Technology:
A New Era of Storytelling**

From a disciplined Chinese fine-brush painting student at the Chinese University of Hong Kong to one of the city's most groundbreaking contemporary artists, Shieh's personal evolution mirrors Hong Kong's own dynamic cultural journey. His architectural series now stands as a symbol of the city's unique fusion of East and West — elegance meets innovation, history meets the future.

This is more than an exhibition; it's an electrifying convergence where myth clashes head-on with technology, ancient heroism ignites fresh creativity, and art transcends its boundaries like never before. "Guan Yu vs. Wilson Shieh" promises a spellbinding cultural adventure — one that will redefine your experience of art forever.



Wilson Shieh, *WWIV 第四次世界大戰*, 2025, acrylic on canvas, 140 by 100 cm © Courtesy of the artist and JPS Gallery

About Wilson Shieh (Hong Kong | B.1970)

Wilson Shieh transfers his intricate Chinese fine-brush, gongbi, painting technique to his various media of choice, ranging from ink on silk, acrylic on canvas to paper cutout collage, filtering the traditional Chinese ink painting through a contemporary lens.

Best known for his figurative paintings, Shieh uses traditional brushwork techniques to depict themes and narratives derived from the popular culture of East Asia and his immediate environment in Hong Kong. In his acclaimed Architectural Series, he transforms the Hong Kong skyscrapers into figures donning tailor-made costumes.

Through his narrative of human bodies, Shieh inquires about the issues of modern identity in an often humorous light.

Born in Hong Kong, Shieh earned a Fine Arts BA and MFA degree from the Chinese University of Hong Kong. He participated in numerous local and overseas exhibitions, including the Third Asia-Pacific Triennial of Contemporary Art in Brisbane in 1999. His works are featured in institutional collections worldwide, including Hong Kong Museum of Art; M+, Hong Kong; Ashmolean Museum, Oxford University; and Asian Art Museum, San Francisco. The artist now lives and works in Hong Kong.

About JPS Gallery

Established in Hong Kong in 2014 and later in Tokyo, JPS Gallery is an independent contemporary art gallery presenting works of emerging and established artists from around the world.

The gallery is founded with a passionate spirit dedicated to the new digital age and the exploration of the world of fine art and pop culture. We aim to create an innovative environment for a new generation of artists and collectors, fostering a creative space for all. We focus on fun and playful works of the era that span across different mediums and disciplines, showcasing a discerning selection of works that embody the aesthetics of today.

We are committed to supporting the culture and art scene across the globe, creating a vibrant local art community. The gallery regularly presents works of emerging artists in our gallery spaces as well as international art fairs, giving them a platform to gain global exposure, supporting young artists to launch their careers. JPS Gallery has also been an active contributor to society and the local art scene by sponsoring various charity events and auctions.

Location

JPS Gallery Hong Kong
G/F, 88 - 90 Staunton Street, Central, Hong Kong

Media Enquiry

For media enquiries and press previews, please contact
Zoe Ho | zoe@jpsgallery.com

Social Media Hashtags

@wilson_shieh_studio @jpsgallery
#GuanYuVSWilsonShieh #關公大戰石家豪 #wilsonshieh #石家豪 #jpsgallery